



Prestige 3D



Prestige 3D Dado

Prestige 3D Dado and Skirting

Prestige 3D Dado and Skirting offers a comprehensive range of Cat 6 compliant full 3 compartment trunking with maximum cable capacity.

Prestige 3D Antibac Blue

Prestige 3D Antibac Blue offers an antibacterial cable management solution for power and data distribution in environments where hygiene is a priority. Prestige 3D Antibac Blue is designed to kill bacteria which can grow on surfaces such as trunking systems. It uses a silver based additive inherent within the PVCu which acts as an effective weapon in fighting harmful bacteria such as MRSA. Independent laboratory tests show kill rate of >99.9% over a 24 hour period for MRSA, and Klebsiella pneumoniae.

Prestige 3D Compact

Prestige 3D Compact is a Dado system which has a smaller footprint and offers a solution where space is restricted such as above radiators and below window sills. Cables are run in the top and bottom compartments allowing the full depth of the centre compartment for termination to devices. The Compact range is a lower price alternative especially if there are low quantities of cable to manage.

- Fully Cat 6 compliant
- Unique design features provide 40%* faster installation time
- Patented Data Sweep maximises cable capacity without the need for bulbous corners
- Improved aesthetics with single piece covers
- All standard extrusions manufactured from 90% recycled materials**

* Independently verified as 40% faster to install than Prestige Plus and similar competitor systems

** Based on 2008 consumption



Prestige 3D Dado & Skirting Features and B

END CAPS

Neatly finishes runs of trunking. (Moulding provides internal location for extra security from optional screw fixing).



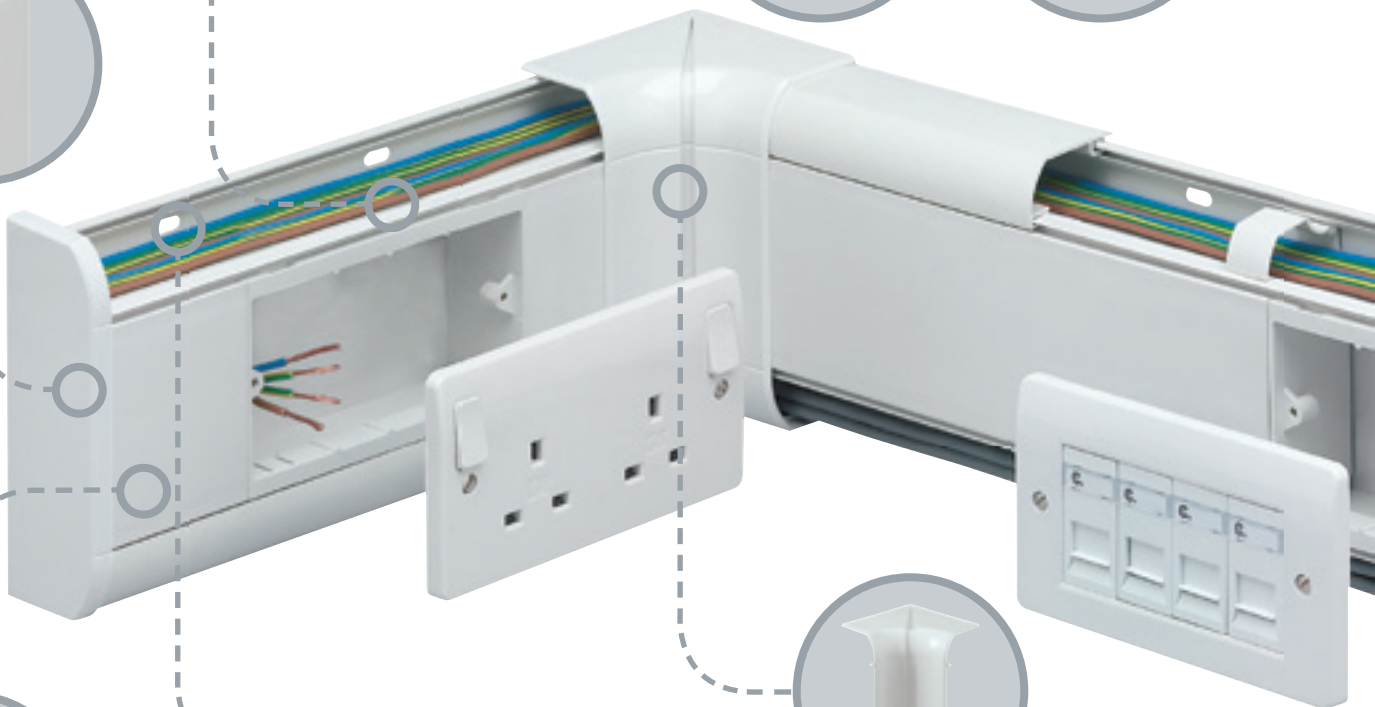
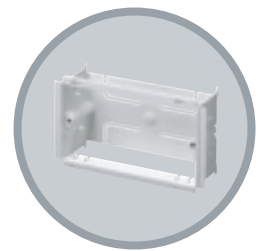
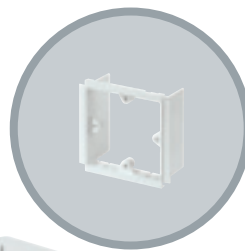
DIVIDER KNOCKOUTS

Wiring is also made easy with 50 x 21mm knockouts at 100mm intervals along compartment dividers, providing instant access to mounting boxes, with no drilling or cutting.

BACK BOXES

The 1, 2 and 3 gang 45mm deep back boxes and 1 and 2 gang 40mm frames ensure Cat 6 compliance and ease of connection to power and data devices. The open top/bottom allows unhindered tool free cable entry, through the trunking compartment divider knockout.

The back box can slide to align with appropriate knockout (see technical pages for restrictions on use).



PRE-PUNCHED BASES

Wall fixing is simplified by the inclusion of pre-punched oval holes at 100mm intervals, ensures no drilling is required.



PART M

Compliance to Part M building regulations can be achieved using Part M flange, charcoal devices or charcoal straight cover.



SCREW FIXING KIT

Where higher security is required, e.g. schools, all fitting covers can be secured using the Screw Fixing Kit. The Screw Fixing Kit is self-locating on the styling line of the system and has a cover to hide the screw head.

INTERNAL CORNER

Designed to accommodate irregularities in the squareness of the corner with a +/- 5 degrees flexibility range. The centre split gives maximum adjustment. Covers are radiused and compatible with Cat 6 data cabling requirements.



enefits

FLAT TEES AND ANGLES

The ingenuity of the patented tee design allows a variety of cable drop permutations. The tee's bridge can be fitted in two positions increasing the versatility of cable runs whilst maintaining the correct segregation and Cat 6 compliance. Screw fixing hole locations have a protective shroud to prevent the chafing of cables. Both the Flat Angle and Tee compartment divider walls are curved (Cat 6 compliant) to allow data cables to lay in with no loss of capacity. The covers are one piece and clip securely into place, and the base is also a single moulded item, giving more strength than fabrication. Joint covers are not required where the tee/angle meets the trunking as the moulded covers now overlap the junction.



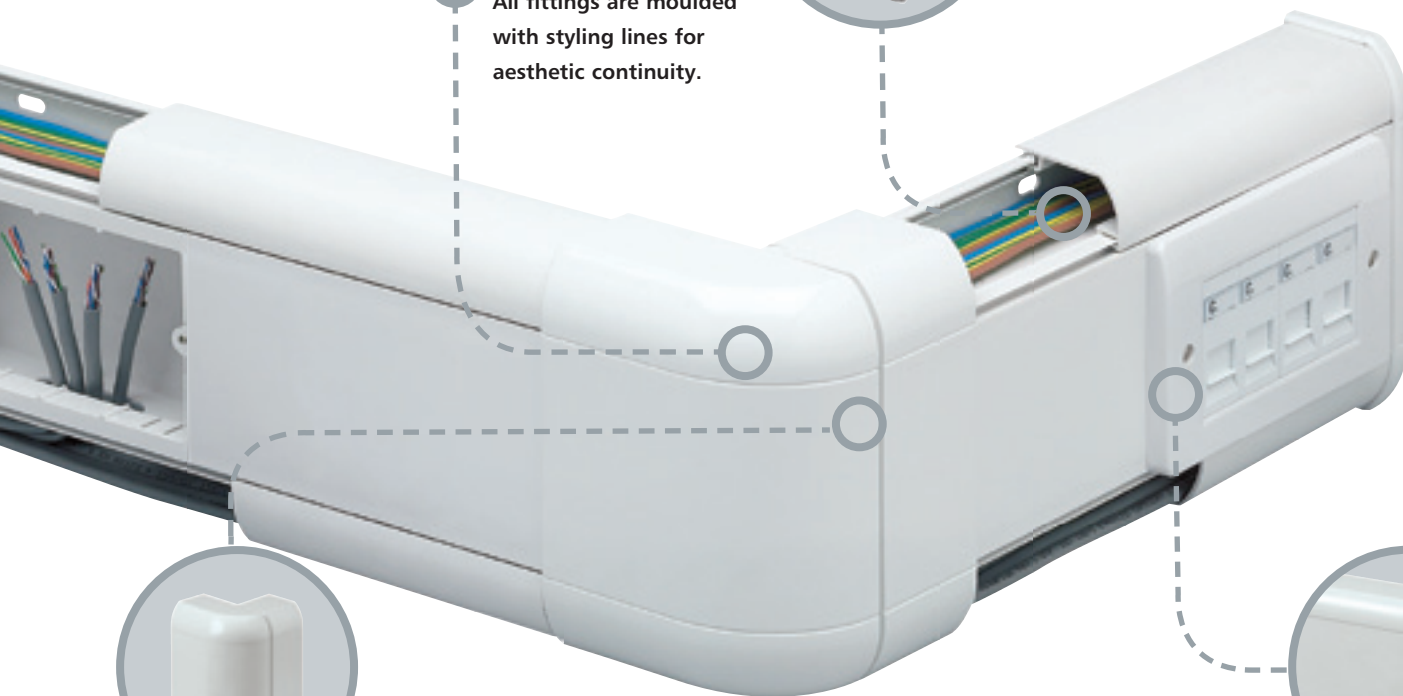
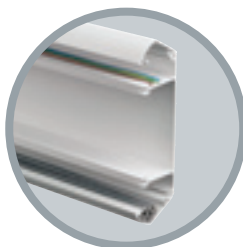
ELECTROMAGNETIC INTERFERENCE

Additional data cable/signal protection is provided by fitting screening divider VP30.

TRUNKING HINGE LIDS

A two stage location gives a hinge effect, enabling cables to be supported by the trunking cover during the installation. Cover design avoids dust traps and makes cleaning easier, and continues the aesthetics of the trunking.

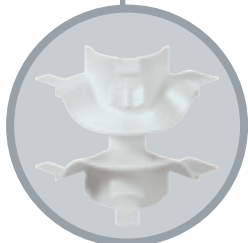
STYLING LINES
All fittings are moulded with styling lines for aesthetic continuity.



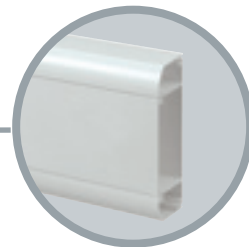
EXTERNAL CORNER
External Corners accommodate +/- 5 degree irregularities in the squareness of a corner. Corners come ready assembled to click into place, and offset side splits hide the effect of the split line for aesthetics.



DATA SWEEP
The unique patented Data Sweep provides Cat 6 data cabling compliance, with no loss of capacity and without the need for bulky, protruding corner covers.



CHOICE OF TWO PROFILES
Available in Dado and Skirting profiles to suit most installations. Available in white, charcoal and choice of RAL colours*.



*Minimum order value. Contact Design Service for details.

Prestige 3D Dado & Skirting

Product Selector

Component
Selector
Chart

PROFILE LENGTHS

Main
Carrier

Straight
Cover

Curved
Cover

Square
Cover

FITTINGS

Flexible
Internal
Corner

3 METRES

6m

3 METRES

30m

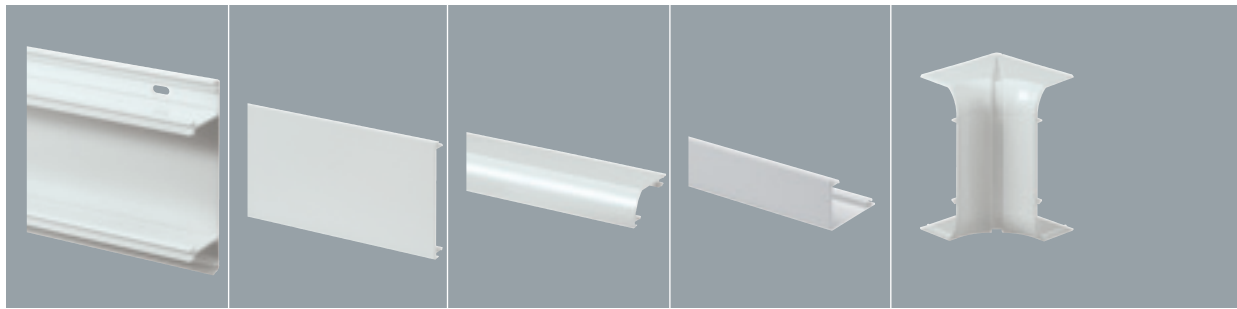
3 METRES

30m

3 METRES

30m

2



VP180 WHI
VP180 CHA

VP100 WHI
VP100 CHA*

VP110 WHI x2
VP110 CHA x2

VP181 WHI
VP181 CHA



VP180 WHI
VP180 CHA

VP100 WHI
VP100 CHA*

VP110 WHI
VP110 CHA

VP115 WHI
VP115 CHA

VP191 WHI
VP191 CHA

* Use Charcoal lid to help achieve compliance to Part M



Flexible External Corner

CONSISTS OF COVER AND DATA SWEEP **2**



VP182 WHI
VP182 CHA

End Cap

SUPPLIED AS LEFT AND RIGHT-HAND PAIR **1**



VP183 WHI
VP183 CHA

Joint Cover

5



VP184 WHI
VP184 CHA

Flat Angle

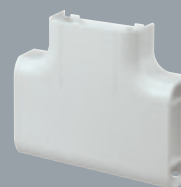
CONSISTS OF COVER AND CARRIER **1**



VP185 WHI
VP185 CHA

Flat Tee

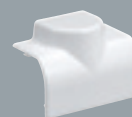
CONSISTS OF COVER AND CARRIER **1**



VP187 WHI
VP187 CHA

Adaptor

SUITABLE FOR 20 AND 25MM CONDUIT AND YT2 AND YT4 MINI-TRUNKING **10**



VP188 WHI
VP188 CHA

VP192 WHI
VP192 CHA

VP193 WHI
VP193 CHA

VP194 WHI
VP194 CHA

Flat Angle Up
VP195 WHI
VP195 CHA

Flat Angle Down
VP196 WHI**
VP196 CHA**

VP197 WHI
VP197 CHA

VP198 WHI
VP198 CHA

** These items are fabricated

Prestige 3D Dado & Skirting Accessories

ACCESSORIES

Socket Spacer



VP129 WHI 50
VP129 CHA 50
SOCKET SPACER 25MM WIDE
Visible width is 9mm after installation.

Part M Flange and Socket Spacer



VX40 CHA 20
VX40 BLU 20
1 GANG MOUNTING FRAME
VX41 WHI 10
VX41 CHA 10
2 GANG MOUNTING FRAME
Provides colour contrast with wiring device to comply with Part M.
Visible width is 25mm after installation.

Open Back Boxes



VP121 WHI 25
VP121 CHA 25
1 GANG MOUNTING FRAME
VP122 WHI 10
VP122 CHA 10
2 GANG MOUNTING FRAME
VP123 WHI 5
VP123 CHA 5
3 GANG MOUNTING FRAME

Open Mounting Frames*



VP131 WHI 25
VP131 CHA 25
1 GANG 40MM OPEN MOUNTING FRAME
VP132 WHI 10
VP132 CHA 10
2 GANG 40MM OPEN MOUNTING FRAME
1 Gang frame is used in vertical applications.
Wings may be removed for greater wiring space.
*Open mounting frames are only suitable where services running in the centre compartment are the same as that of the accessory.

MCB/RCD Housing



VP35 WHI 1
MCB/RCD HOUSING WITH COVER (ACCESSORY NOT SUPPLIED)
Mounts directly to central compartment of trunking to accept up to 2 x one module products from the Sentry range of MCBs and RCDs (excluding one module RCBOs).

Cable Retainer



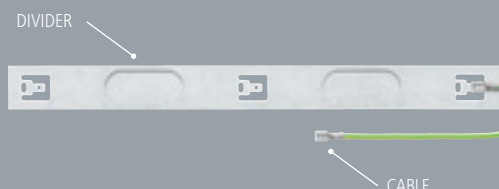
VP105 WHI 50
CABLE RETAINER

Screw Fixing Kit



VTS1000 WHI 20
SCREW FIXING KIT

Screening Divider



VP30** 15m
1.5M SCREENING DIVIDER
VX31 10
300MM SCREEN CONNECTING CABLE
VX32 10
500MM SCREEN CONNECTING BRAID
VX33 10
500MM SCREEN CONNECTING CABLE

** Cable not included



Prestige 3D Antibac Blue



Prestige 3D Antibac Blue installed with Logic Plus Part M Switchsocket Outlets

New from MK Electric, Prestige 3D Antibac Blue offers an antibacterial cable management solution for power and data distribution in environments where hygiene is a priority. With ongoing concern over hospital acquired infections such as MRSA, the demand for antibacterial products continues to rise. Prestige 3D Antibac Blue is designed to kill bacteria which can grow on surfaces such as trunking systems. It uses a silver based additive inherent within the PVCu which acts as an effective weapon in fighting harmful bacteria such as MRSA, and Klebsiella pneumoniae.

MK offer a complete antibacterial solution, by complementing Prestige 3D Antibac Blue with Logic Plus wiring devices, the entire installation will meet the requirements of an antibacterial specification. The trunking and wiring devices are both open to contact, therefore the control of the spread of bacteria and infections can only be effective with a complete solution.

MK's Prestige 3D Antibac Blue range will meet the demands of the Healthcare Trusts, Infection Control Departments or Facilities Managers specifying antibacterial products, as well as providing the fastest installation for Contractors, the range has been independently verified as 40% faster than similar competitor systems to install*.

- **The only manufacturer to offer a complete antibacterial solution**
- **>99.9% kill rate against MRSA, and Klebsiella pneumoniae**
- **Unique patent pending fluorescence under UV light, providing customer confidence**
- **Fully Cat 6 compliant**
- **Patented Data Sweep maximises cable capacity**
- **Screw fixing kit available for installations where higher security is required, e.g. public buildings, hospitals, schools**
- **Part M compliance achievable utilising Logic Plus graphite wiring devices, or the Part M Flange or Socket Spacer**
- **Independently verified as 40% faster to install***

* Independently verified as 40% faster to install than Prestige Plus and similar competitor systems



Prestige 3D Antibac Blue

Reports show 300,000 healthcare associated infections were contracted in the investment of £270million in infection control.

- Healthcare associated infections cause 5000 deaths a year, at a cost of £1billion.
- Patients recovering from such infections spend on average 10 extra days in hospital, which is a significant cost of treatment.
- The use of antibacterial products supports the existing infection control initiatives such as



PRESTIGE 3D ANTIBAC BLUE INSTALLED WITH MEIGAN SOCKET OUTLETS

How does Prestige 3D Antibac Blue work?

Prestige 3D Antibac Blue is an antibacterial 3 compartment power and data trunking system designed to kill bacteria which can grow on surfaces.

It uses a silver based additive inherent within the PVCu which acts as an effective weapon in fighting bacteria such as MRSA and other harmful bacteria. The silver additive is a bactericide and will therefore kill bacteria instead of just restricting their growth.

As the additive is inherent within the PVCu compound the antibacterial protection runs throughout the products themselves. There is no loss of protection where the trunking lengths are cut on-site or if the trunking surface becomes scuffed or scratched.

The antibacterial additive depends on intimate contact between surfaces of the trunking and the user, so any barriers such as dirt or grime will reduce or negate the antibacterial effect.

Prestige 3D Antibac Blue is not intended to replace standard cleaning regimes. It is an additional protection which can only operate efficiently if the surfaces are kept free of dirt and grime.

The antibacterial additive used in Prestige 3D Antibac Blue is registered with the Environmental Protection Agency (EPA) and compliant with the European Biocidal Products Directive (BPD).

The additive provides effective protection against both gram positive and gram negative bacteria, unlike some other antibacterial additives which are only effective against gram positive bacteria.



he UK in 2008, with an annual

costs the NHS three times their original

hand hygiene and barrier nursing.



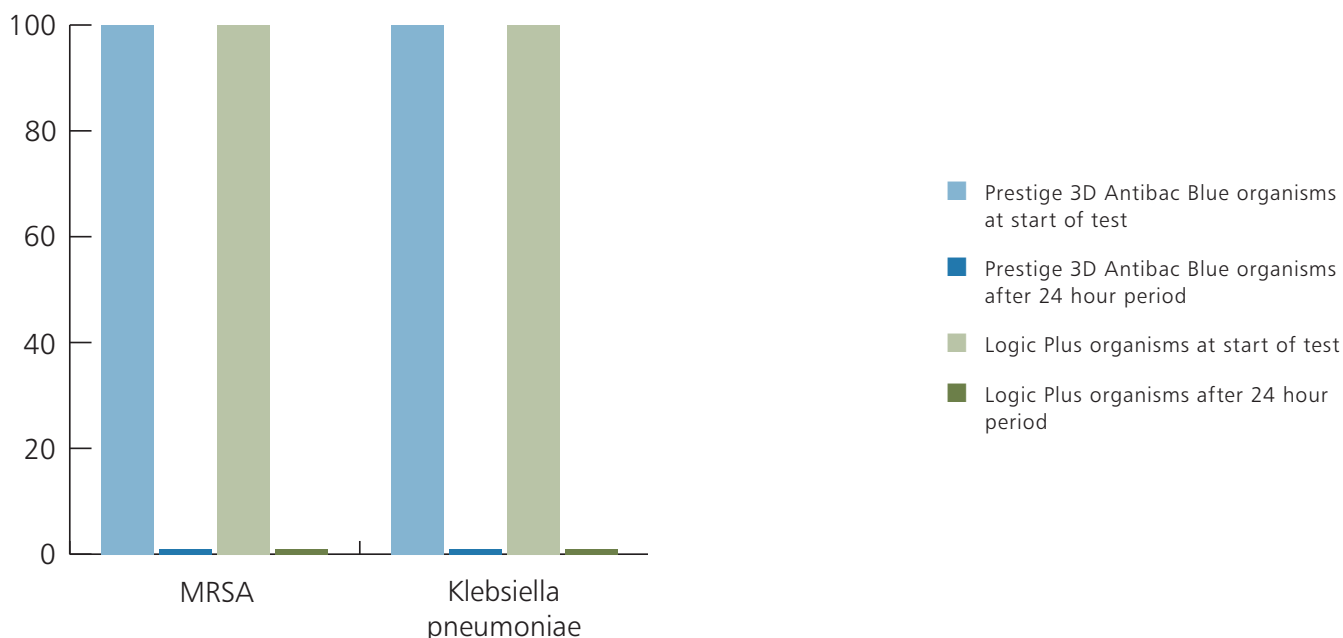
MK Electric have commissioned independent tests to verify the antibacterial properties of Prestige 3D Antibac Blue. The results, collected over a 24 hour period shows results of >99.9% kill rates on the organisms MRSA, and Klebsiella pneumoniae.

MK Electric have also commissioned independent tests to verify the antibacterial properties of Logic Plus. The results, collected over a 24 hour period shows results of 99.9% kill rates on the organism MRSA and 98.9% kill rates on the organism Klebsiella pneumoniae.

	PRESTIGE 3D ANTIBAC BLUE		LOGIC PLUS	
	% Organisms at start of test	% Organisms after 24 hour period	% Organisms at start of test	% Organisms after 24 hour period
MRSA	100	<0.1	100	0.1
Klebsiella pneumoniae	100	<0.1	100	1.1



LOGIC PLUS SWITCHSOCKET OUTLET



Prestige 3D Antibac Blue

Features and Benefits

END CAPS

Neatly finishes runs of trunking. (Moulding provides internal location for extra security from optional screw fixing).

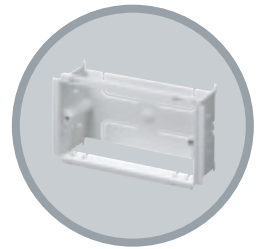
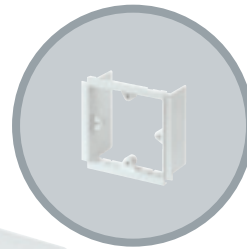


DIVIDER KNOCKOUTS

Wiring is also made easy with 50 x 21mm knockouts at 100mm intervals along compartment dividers, providing instant access to mounting boxes, with no drilling or cutting.

BACK BOXES

The 1, 2 and 3 gang 45mm deep back boxes and 1 and 2 gang 40mm frames ensure Cat 6 compliance and ease of connection to power and data devices. The open top/bottom allows unhindered tool free cable entry, through the trunking compartment divider knockout. The back box can slide to align with appropriate knockout (see technical pages for restrictions on use).



PRE-PUNCHED BASES

Wall fixing is simplified by the inclusion of pre-punched oval holes at 100mm intervals, ensures no drilling is required.



INTERNAL CORNER

Designed to accommodate irregularities in the squareness of the corner with a +/- 5 degrees flexibility range. The centre split gives maximum adjustment. Covers are radiused and compatible with Cat 6 data cabling requirements.

PART M

Compliance to Part M building regulations can be achieved using Part M flange or charcoal devices.



SCREW FIXING KIT

Where higher security is required, e.g. schools, all fitting covers can be secured using the Screw Fixing Kit. The Screw Fixing Kit is self-locating on the styling line of the system and has a cover to hide the screw head.

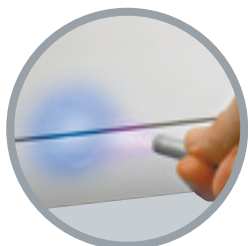


* Independently verified as 40% faster to install than Prestige Plus and similar competitor systems

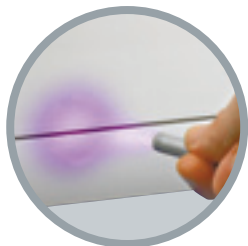


UNIQUE FLUORESCENCE

For complete customer confidence, Prestige 3D Antibac Blue features a patent pending fluorescent additive which glows bright blue under a UV light, unlike standard PVCu which glows dull purple.



Prestige 3D Antibac Blue



Prestige 3D

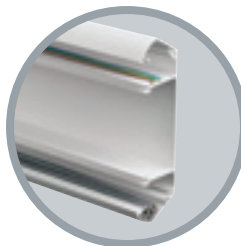
FLAT TEES AND ANGLES

The ingenuity of the patented tee design allows a variety of cable drop permutations. The tee's bridge can be fitted in two positions increasing the versatility of cable runs whilst maintaining the correct segregation and Cat 6 compliance. Screw fixing hole locations have a protective shroud to prevent the chafing of cables. Both the Flat Angle and Tee compartment divider walls are curved (Cat 6 compliant) to allow data cables to lay in with no loss of capacity. The covers are one piece and clip securely into place, and the base is also a single moulded item, giving more strength than fabrication. Joint covers are not required where the tee/angle meets the trunking as the moulded covers now overlap the junction.



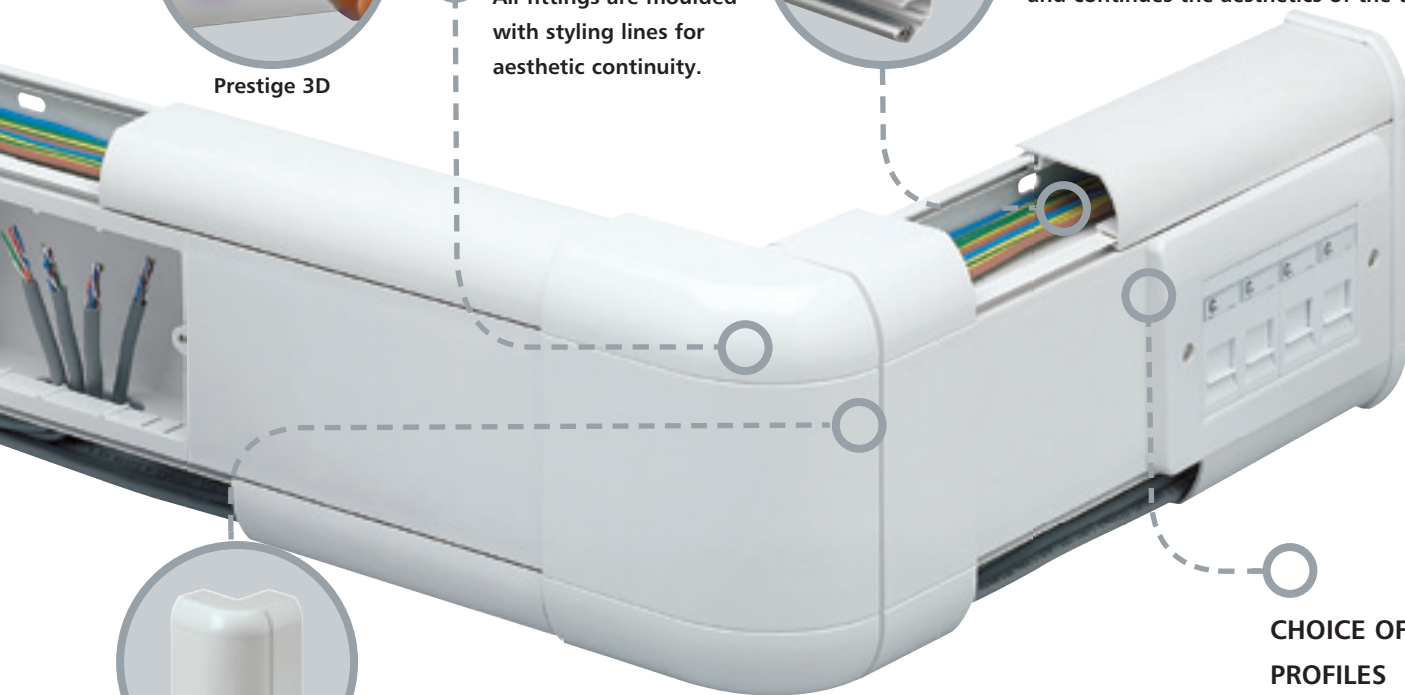
TRUNKING HINGE LIDS

A two stage location gives a hinge effect, enabling cables to be supported by the trunking cover during the installation. Cover design avoids dust traps and makes cleaning easier, and continues the aesthetics of the trunking.



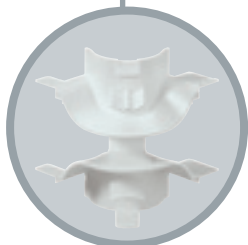
STYLING LINES

All fittings are moulded with styling lines for aesthetic continuity.



EXTERNAL CORNER

External Corners accommodate +/- 5 degree irregularities in the squareness of a corner. Corners come ready assembled to click into place, and offset side splits hide the effect of the split line for aesthetics.



DATA SWEEP

The unique patented Data Sweep provides Cat 6 data cabling compliance, with no loss of capacity and without the need for bulky, protruding corner covers.

ELECTROMAGNETIC INTERFERENCE

Additional data cable/signal protection is provided by fitting screening divider VP30.

CHOICE OF TWO PROFILES

Available in Dado and Skirting profiles to suit most installations.

Prestige 3D Antibac Blue Product Selector

Component
Selector
Chart

PROFILE LENGTHS

Main
Carrier*

3 METRES

6m

Straight
Cover

3 METRES

30m

Curved
Cover

3 METRES

30m

Square
Cover

3 METRES

30m

FITTINGS

Flexible
Internal
Corner

2

Flexible
External
Corner

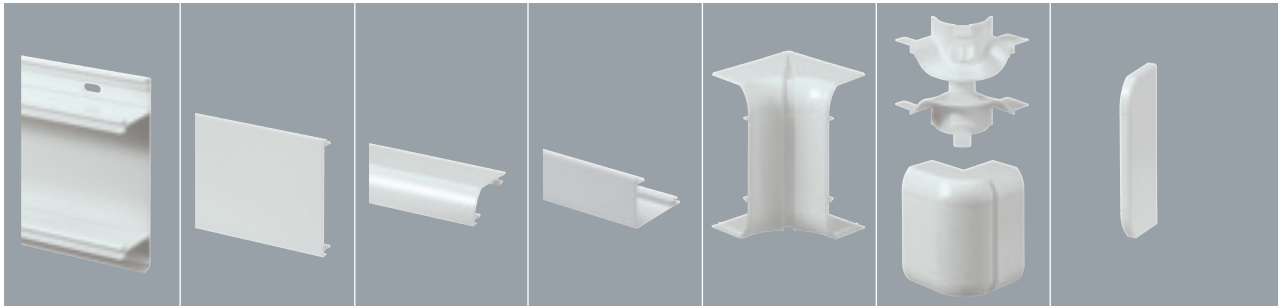
CONSISTS
OF COVER
AND DATA
SWEEP

2

End Cap

SUPPLIED AS
LEFT AND
RIGHT-HAND
PAIR

1



VP180 WHI

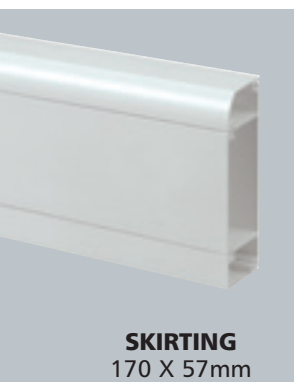
VPAB100 WHI

VPAB110 WHI
x2

VPAB181 WHI

VPAB182 WHI

VPAB183 WHI



VP180 WHI

VPAB100 WHI

VPAB110 WHI

VPAB115 WHI

VPAB191 WHI

VPAB192 WHI

VPAB193 WHI

* Carrier components do not require the antibacterial additive as they have no exposure once the installation is complete. As such, the standard main carrier is sufficient, as are standard back boxes, mounting frames and cable retainers. The carrier components of the External Corner, Flat Angle and Flat Tee are also standard PVCu due to no exposure once installation is complete.



ACCESSORIES

Joint
Cover

Flat Angle

Flat Tee

Flange and
Socket Spacer

Open Back
Boxes

Open
Mounting
Frames*

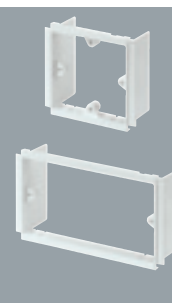
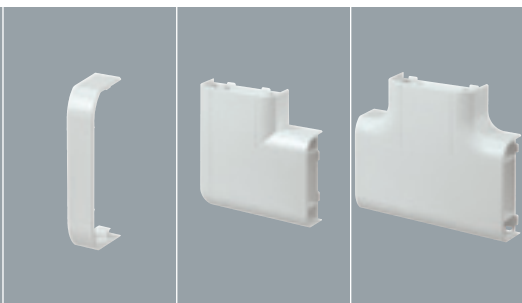
CONSISTS
OF COVER
AND
CARRIER

CONSISTS
OF COVER
AND
CARRIER

5

1

1



VPAB184 WHI

VPAB185 WHI

VPAB187 WHI

VXAB40 CHA* 20
PART M FLANGE FITTED BOTH
SIDES OF A DEVICE

VXAB41 CHA* 10
PART M SOCKET SPACER

VPAB129 WHI** 50
SOCKET SPACER

Provides colour contrast with
wiring device to comply with
Part M.

* Visible width is 25mm after
installation.

** Visible width is 9mm after
installation.

VP121 WHI 25
VP121 CHA 25
1 GANG MOUNTING FRAME

VP122 WHI 10
VP122 CHA 10
2 GANG MOUNTING FRAME

VP123 WHI 5
VP123 CHA 5
3 GANG MOUNTING FRAME

VP131 WHI 25
VP131 CHA 25
1 GANG 40MM OPEN
MOUNTING FRAME

VP132 WHI 10
VP132 CHA 10
2 GANG 40MM OPEN
MOUNTING FRAME

1 Gang frame is used in vertical applications.
Wings may be removed for greater wiring space.

*Open mounting frames are only suitable where
services running in the centre compartment are
the same as that of the accessory.

VPAB194 WHI

Flat Angle Up
VPAB195 WHI

Flat Angle
Down
VPAB196 WHI

VPAB197 WHI

Cable
Retainer

Screw
Fixing Kit

Screening
Divider



VP105 WHI 50
CABLE RETAINER

VTSAB1000 WHI 20
SCREW FIXING KIT

VP30** 15m
1.5M SCREENING
DIVIDER

VX31 10
300MM SCREEN
CONNECTING CABLE

VX32 10
500MM SCREEN
CONNECTING BRAID

VX33 10
500MM SCREEN
CONNECTING CABLE

**Cable not included

Prestige 3D Antibac Blue

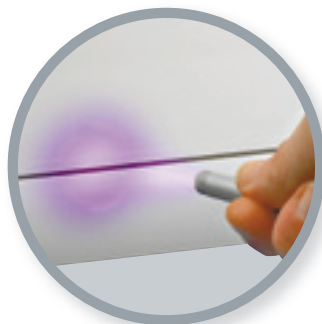
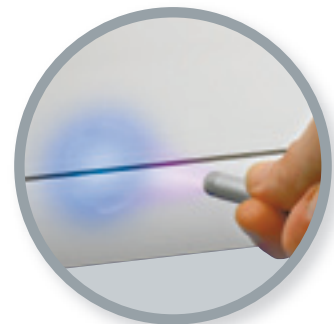
Unique Fluorescence

UNIQUE FLUORESCENCE

For complete customer confidence, Prestige 3D Antibac Blue features a patent pending fluorescent additive which glows bright blue under a UV light, unlike standard PVCu which glows dull purple.

Prestige 3D Antibac Blue is easily distinguishable from standard Prestige 3D, it has a different protective film.

Prestige 3D Antibac Blue



Prestige 3D

Prestige 3D Compact



Prestige 3D Compact completes the 3D offering with all the 3D benefits of faster installation, Cat 6 compliance and improved aesthetics, but in a smaller footprint & ideal for confined locations. The new concept uses the full trunking depth with a sliding open box (frame) principle to ease power and data connections. Prestige 3D Compact trunking is compliant with Cat 6 data cable installation requirements, and the depth is more conducive to data accessories.

- **Faster installation – 40% quicker than Prestige Plus and other leading manufacturers**
- **Cat 6 compliant flexible Internal and External Corners, moulded Flat Angles and Tees**
- **Patented unique ‘open box’ mounting frames combined with divider knockouts to provide unhindered tool-free cable entry**
- **Innovative patented External Corner Data Sweep allows continuous cable capacity and maintains the Compact minimum trunking depth**
- **Patented hinged lid to support cables during installation**
- **Pre-punched bases**
- **Curved outer covers that complement MK Logic Plus accessories**
- **All extrusions manufactured from 90% recycled material***

* Based on 2008 consumption.



Prestige 3D Compact Features and Benefits

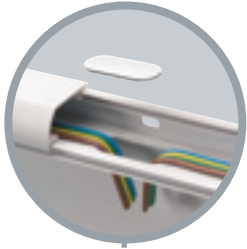
END CAPS

Neatly finishes runs of trunking. Moulding provides internal location for extra security from optional screw fixing.



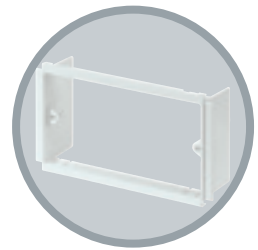
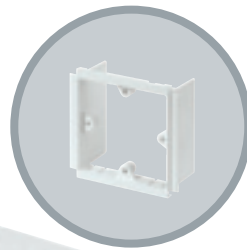
DIVIDER KNOCKOUTS

Wiring is also made easy with 50mm x 21mm knockouts at 100mm intervals along compartment dividers, providing instant access to mounting boxes with no drilling or cutting.



MOUNTING FRAMES

1 gang and 2 gang 'open box' mounting frames use the full trunking depth allowing ease of connection to power and data devices. The open top/bottom allows unhindered tool free cable entry through the trunking compartment divider knockout. The frame can slide to align with appropriate knockout.



PRE-PUNCHED BASES

Wall fixing is simplified by the inclusion of pre-punched oval holes at 100mm intervals, ensures no drilling is required.



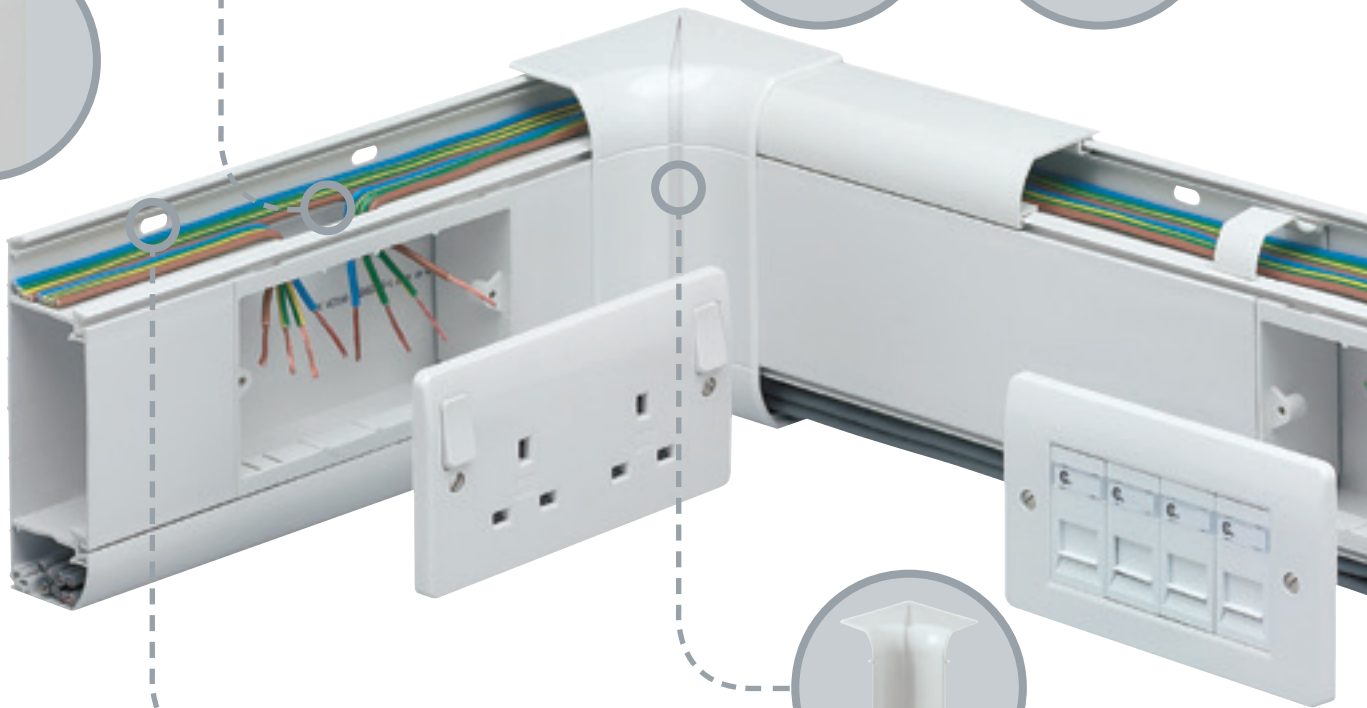
SCREW FIXING KIT

Where higher security is required, all fitting covers can be secured using the Screw Fixing Kit. The Screw Fixing Kit is self-locating on the styling line of the system and has a cover to hide the screw head.



INTERNAL CORNER

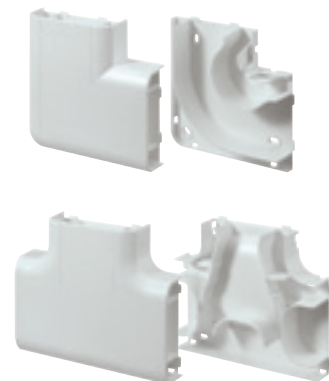
Designed to accommodate irregularities in the squareness of the corner with a +/- 5 degree flexibility range. The centre split gives maximum adjustment. Covers are radiused and compatible with Cat 6 data cabling requirements.





FLAT TEES AND ANGLES

The ingenuity of the patented tee design allows a variety of cable drop permutations. The tee's bridge can be fitted in two positions increasing the versatility of cable runs whilst maintaining the correct separation and Cat 6 compatibility. Screw fixing hole locations have a protective shroud to prevent the chafing of cables. Both the Flat Angle and Tee compartment divider walls are curved (Cat 6 compliant) to allow data cables to lay in with no loss of capacity. The covers are one piece and clip securely into place, bases are also single mouldings giving more strength than an equivalent fabrication. Joint covers are not required where the tee/angle meets the trunking as the moulded covers now overlap the junction.

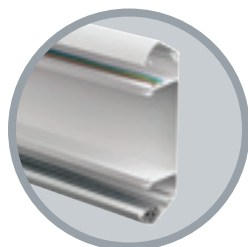


ELECTROMAGNETIC INTERFERENCE

Additional data cable/signal protection is provided by fitting screening divider VCT30.

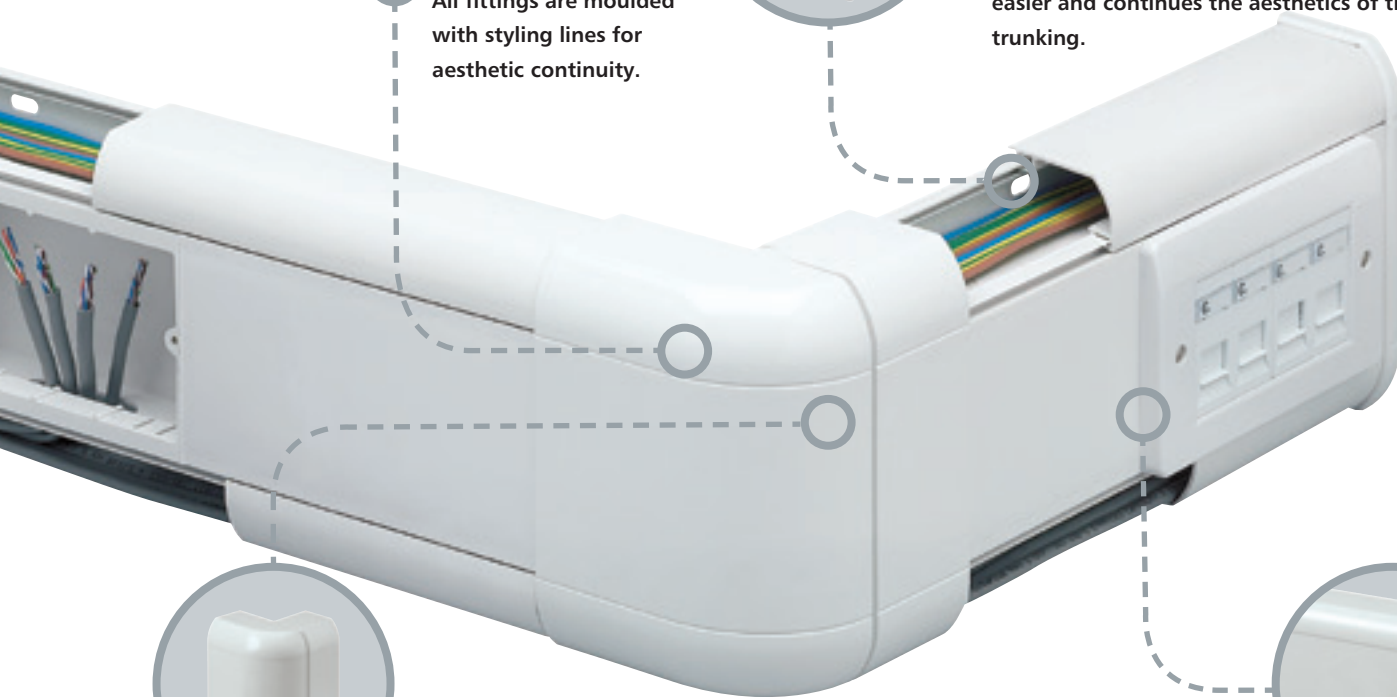
STYLING LINES

All fittings are moulded with styling lines for aesthetic continuity.



TRUNKING HINGED LIDS

A patented two stage location gives a hinge effect, enabling cables to be supported by the trunking cover during the installation. Cover design avoids dust traps and makes cleaning easier and continues the aesthetics of the trunking.



EXTERNAL CORNER

External Corners accommodate +/- 5 degree irregularities in the squareness of a corner. Corners come ready assembled to click into place and offset side split hides the effect of the split line for aesthetics.



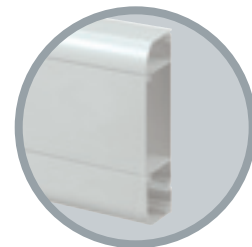
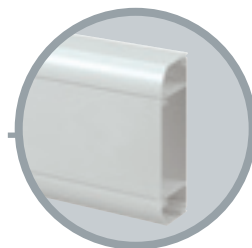
DATA SWEEP

The unique patented Data Sweep provides Cat 6 data cabling compliance, with no loss of capacity and without the need for bulky protruding corner covers.



CHOICE OF TWO PROFILES

140 x 45mm and 160 x 45mm choice of profile to suit more confined locations and installation needs around the wall and below the window.



Prestige 3D Compact Product Selector

Component
Selector
Chart

PROFILE LENGTHS

Main Carrier

Extension
Carrier

Straight
Cover

Curved
Cover

Extension
Cover

3 METRES

6m

3 METRES

15m

3 METRES

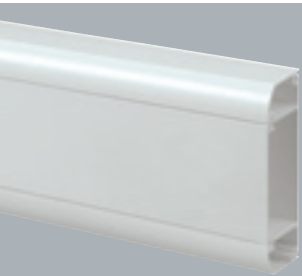
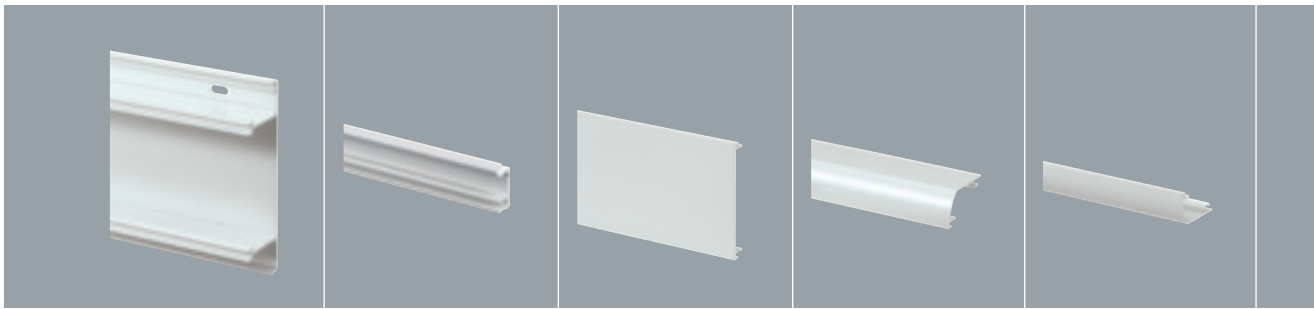
30m

3 METRES

30m

3 METRES

15m

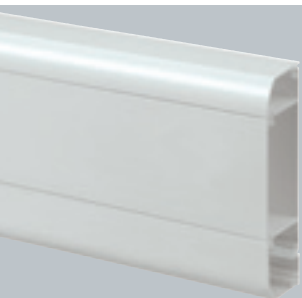


DADO
140 X 45mm

VCT140 WHI

VCT100 WHI

VCT110 WHI X2



EXTENDED DADO
160 X 45mm

VCT140 WHI

VCT160 WHI

VCT100 WHI

VCT110 WHI

VCT120 WHI



FITTINGS

Flexible
Internal
Corner

2

Flexible
External
Corner

CONSISTS
OF COVER
AND DATA
SWEEP

2

End Cap

SUPPLIED AS
PAIR OF LEFT
AND RIGHT-
HAND END
CAPS

2

Joint Cover

5

Flat Angle
Up

CONSISTS OF
COVER AND
CARRIER

2

Flat Angle
Down

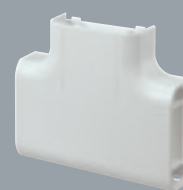
CONSISTS OF
COVER AND
CARRIER

2

Flat Tee
Up

CONSISTS OF
COVER AND
CARRIER

1



VCT141 WHI

VCT142 WHI

VCT143 WHI

VCT144 WHI

VCT145 WHI

VCT145 WHI

VCT147 WHI
UP/DOWN

VCT161 WHI

VCT162 WHI

VCT163 WHI
(2X L/R PAIRS)

VCT164 WHI

VCT165 WHI

VCT166 WHI

VCT167 WHI

Prestige 3D Compact Accessories

ACCESSORIES

Socket Spacer



VCT25 WHI
SOCKET SPACER

10

Visible width is 9mm after installation.

Part M Flange and Socket Spacer



VX40 CHA
VX40 BLU

PART M FLANGE FITTED BOTH SIDES OF A DEVICE

VX41 CHA
VX41 BLU

PART M SOCKET SPACER

Provides colour contrast with wiring device to comply with Part M.

Visible width is 25mm after installation.

Open Mounting Frames



VCT121 WHI

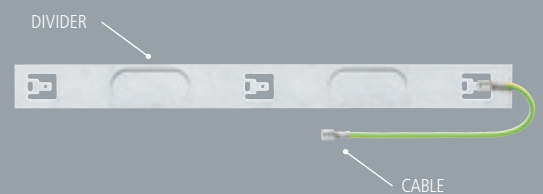
1 GANG 40MM OPEN MOUNTING FRAME

VCT122 WHI

2 GANG 40MM OPEN MOUNTING FRAME

Wings may be removed for increased wiring space.

Screening Divider



VCT30*

1.5M SCREENING DIVIDER

VX31

300MM SCREEN CONNECTING CABLE

VX32

500MM SCREEN CONNECTING BRAID

VX33

500MM SCREEN CONNECTING CABLE

* Cable not included

Adaptors

SUITABLE FOR 20 AND 25MM CONDUIT AND YT2 AND YT4 MINI-TRUNKING. CONSISTS OF COVER AND CENTRE COMPARTMENT CABLE BRIDGE



VCT148 WHI

FOR USE WITH COVER VCT110 WHI

10

VCT168 WHI

FOR USE WITH COVER VCT120 WHI EXTENSION COVER

10

Cable Retainer



VCT105 WHI

CABLE RETAINER

50

Screw Fixing Kit



VTS1000 WHI

SCREW FIXING KIT

20

MCB/RCD Housing



VCT35 WHI

MCB/RCD HOUSING WITH COVER (ACCESSORY NOT SUPPLIED)

1

Mounts directly to central compartment of trunking to accept up to 2 x one module products from the Sentry range of MCBs and RCDs (excluding one module RCBOs).

Prestige 3D Dado & Skirting

Technical



Data Trunking System

Standards and approvals

The Prestige 3D System is manufactured in accordance with the requirements of BS EN 50085-1: 2005 and BS 4662: 2006. Copies of test certificates are available upon request. The system complies with all the relevant requirements of BS 7671: 2008. MK has been awarded ISO 9002 accreditation.

Features

- Greater trunking depth, increased data and power cable capacity, accepts 45mm deep back boxes
- Patented Cat 6 compliant Data Sweep, with no loss of capacity and without the need for bulbous, protruding corner covers
- Cat 6 compliant moulded flexible Internal and External Corners, moulded Flat Angles and Tees
- Divider Knockouts, making wiring easier and faster with no drilling or cutting
- Patented two stage Hinge Lids enables cables to be supported by the trunking cover during installation, and makes retro-installation of additional cables more simple
- All extrusions manufactured from 90% recycled material*

Prestige 3D Antibac Blue

New from MK, an antibacterial cable management solution for power and data distribution in environments where hygiene is a priority.

Prestige 3D Compact

A Dado system which has a smaller footprint and offers a solution for confined locations, such as between radiators and window sills.



Description

Prestige 3D is the new three compartment dado, skirting and compact trunking from MK that satisfies the growing data demands of cable management installations. As well as providing greater depth for larger cable capacity, Prestige 3D is rich in new features, offering installation benefits and improved cable management. Prestige 3D is Cat 6 compliant, with the new Data Sweep, Flat Angles and Tees, all allowing continuous cable capacity.

Technical specification

CE marking

All relevant MK products in this brochure are CE marked, confirmation that they meet the EMC and LV directives.

Manufacture

All trunking components are manufactured from PVCu.

Appearance

Prestige 3D is manufactured in white. The trunking surface can be painted, if required, after installation. Antibac Blue must not be painted or otherwise coated.

Performance

Impact	Medium
Minimum Storage Temperature	-25°C
Minimum Installation Temperature	-5°C
Maximum Application Temperature	+60°C

Fire performance

The PVCu materials used in the manufacture of MK products are non-flame propagating in accordance with BS EN 50085-1: 2005.

Extrusion material has achieved classification 1Y in accordance with BS 476-7. Moulding material has achieved 650°C glow wire rating in accordance with BS EN 60695-2-11: 2001.

Thermal properties

Prestige 3D trunking is designed to accommodate local thermal expansion. Fitting instructions explain the procedure required to deal with the differential movement at the interface with the building fabric.

Linear Expansion: 4mm over every 3000mm with a temperature rise of 25°C.

Chemical resistance

The PVCu materials used are non-corrosive and not affected by seawater. It has excellent resistance to mineral acids, alkalis and detergents, good resistance to alcohols, but is liable to attack from solvents such as ketones, aromatics and hydrocarbons.

Electrical

Prestige 3D trunking is non-conductive.

Dielectric strength	40 kV/mm in DBP
	17 kV/mm in tx oil
Resistivity	1014 Ω cm

Biological

Prestige 3D trunking is resistant to vermin and termites.

Workability

Prestige 3D trunking is lightweight and can readily be cut and drilled to suit installation needs with hand tools.

Durability

Prestige 3D trunking is stable and will maintain its performance characteristics in accordance with the terms and conditions described above.

Maintenance

Clip-on covers with optional screw fix and interchangeable accessories provide continuous accessibility for rewiring, extensions and modifications to an installation. Covers and accessories can be cleaned with water and household detergent. The surface can be decorated with commercial paints if required.

* Based on 2008 consumption

Prestige 3D Dado & Skirting

Dimensions & Cable Capacities

Data Trunking System

Dimensions (mm)

Profiles

Compartment CSA mm²

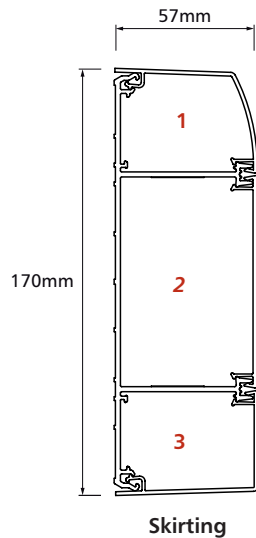
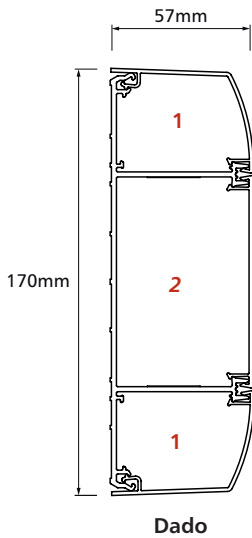
- 1 = 1763
- 2 = 3828
- 3 = 1952

Assembly

Dado = 1.58 kg/m
Skirting = 1.60 kg/m

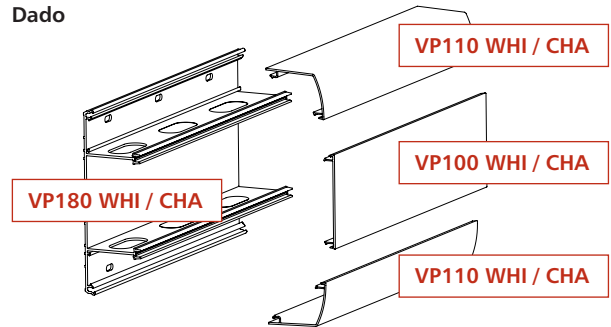
Wall Thickness

VP100 = 1.7mm
VP110 = 1.7mm
VP115 = 1.7mm
VP180 = 2.0mm

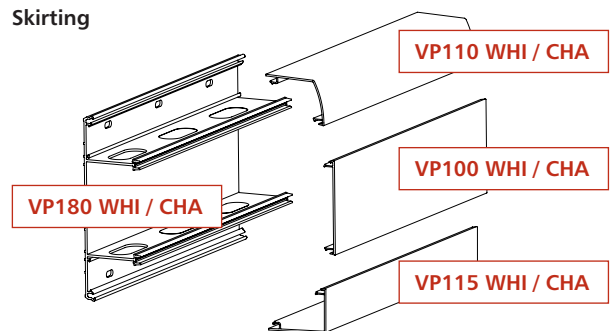


Component selection guide

Dado



Skirting



CABLE CAPACITY											
Type of conductor	Size	Cable factor	Compartment 1		Compartment 2		Compartment 2 with 45mm deep box		Compartment 3		
			Full Term CSA (mm ²)								
			1763		3828		610		1952		
Term at 45% fill (mm ²)											
793		1722		274		878					
Power cables			Number of cables at 45% fill								
PVC stranded	1.5mm ²	8.6	92		200		31		102		
	2.5mm ²	12.6	62		136		21		69		
	4mm ²	16.6	47		103		16		52		
	6mm ²	21.2	37		81		12		41		
Data cables			Number of cables at 45% fill (a) and full capacity (b)								
			a	b	a	b	a	b	a	b	
Cat 5E UTP	5.5mm dia.	30.2	26	58	57	126	9	20	29	64	
Cat 5E STP	6.0mm dia.	36.0	22	48	47	106	7	16	24	54	
Cat 6 UTP	6.5mm dia.	42.2	18	41	40	90	6	14	20	46	
Cat 6 STP	7.0mm dia.	49.0	16	35	35	78	5	12	17	39	

Prestige 3D Dado & Skirting Technical



Data Trunking System

Component selection guide

End Cap
Dado - VP183 WHI / CHA
Skirting - VP193 WHI / CHA

Internal Corner
Dado - VP181 WHI / CHA
Skirting - VP191 WHI / CHA

Flat Angle Up
Dado - VP185 WHI / CHA
Skirting - VP195 WHI / CHA

Flat Angle Down
Dado - VP185 WHI / CHA
Skirting - VP196 WHI / CHA*

Joint Cover
Dado - VP184 WHI / CHA
Skirting - VP194 WHI / CHA

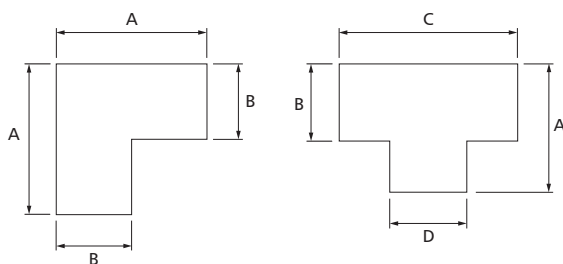
External Corner
Dado - VP182 WHI / CHA
Skirting - VP192 WHI / CHA

Flat Tee Up
Dado - VP187 WHI / CHA
Skirting - VP197 WHI / CHA

Flat Tee Down
Dado - VP187 WHI / CHA

*This item is fabricated rather than moulded

Flat angles and tees



FLAT ANGLES AND TEES DIMENSIONS (mm)					
LIST NO	DESCRIPTION	A	B	C	D
VP185 WHI / CHA	Flat Angle	218mm	170mm		
VP187 WHI / CHA	Flat Tee	202mm	170mm	235mm	170mm
VP195 WHI / CHA	Flat Angle Up	218mm	170mm		
VP196 WHI / CHA	Flat Angle Down	270mm	170mm		
VP197 WHI / CHA	Flat Tee Up	202mm	170mm	235mm	170mm

Prestige 3D Compact Technical

Data Trunking System

Standards and approvals

The Prestige 3D Compact System is manufactured in accordance with the requirements of BS EN 50085-1:2005 and BS 4662: 2006. Copies of test certificates are available upon request. The system complies with all the relevant requirements of BS 7671: 2008. MK has been awarded ISO 9002 accreditation.

Features

- Unique 'open box' mounting frames combined with divider knockouts to provide unhindered tool-free cable entry
- Patented Cat 6 compliant Data Sweep, with no loss of capacity and without the need for bulbous, protruding corner covers
- Cat 6 compliant moulded flexible Internal and External Corners, moulded Flat Angles and Tees
- Divider Knockouts, making wiring easier and faster with no drilling or cutting
- Patented two stage Hinge Lids enables cables to be supported by the trunking cover during installation, and makes retro-installation of additional cables more simple
- Pre-punched bases
- Attractive easy to fit single piece covers for flat angle and flat tee
- Curved outer covers that complement MK Logic Plus accessories
- All extrusions manufactured from 90% recycled material*



Description

Prestige 3D Compact satisfies the growing data demands in more confined locations. Prestige 3D Compact has a smaller footprint than Prestige Plus and Prestige 3D and is rich in features, offering installation benefits and improved data cable management. The new concept uses the full trunking depth with a sliding open box (frame) principal to ease power and data connections. Prestige 3D Compact trunking is capable of being installed to Cat 6 data cable installation requirements, and the depth is more conducive to data accessories.

The centre compartment is intended for accessory mounting only. Power and data cables are to be run in the outer compartments.

Technical specification

CE marking

All relevant MK products in this brochure are CE marked, confirmation that they meet the EMC and LV directives.

Manufacture

All trunking components are manufactured from PVCu.

Appearance

Prestige 3D Compact is manufactured in white. The trunking surface can be painted, if required, after installation.

Performance

Impact	Medium
Minimum Storage Temperature	-25°C
Minimum Installation Temperature	-5°C
Maximum Application Temperature	+60°C

Fire performance

The PVCu materials used in the manufacture of MK products are non-flame propagating in accordance with BS EN 50085-1: 2005.

Extrusion material has achieved classification 1Y in accordance with BS 476-7: 1997. Moulding material has achieved 650°C glow wire rating in accordance with BS EN 60695-2-11: 2001.

Thermal properties

Prestige 3D Compact trunking is designed to accommodate local thermal expansion. Fitting instructions explain the procedure required to deal with the differential movement at the interface with the building fabric.

Linear Expansion: 4mm over every 3000mm with a temperature rise of 25°C.

Chemical resistance

The PVCu materials used are non-corrosive and not affected by seawater. It has excellent resistance to mineral acids, alkalis and detergents, good resistance to alcohols, but is liable to attack from solvents such as ketones, aromatics and hydrocarbons.

Electrical

Prestige 3D Compact trunking is non-conductive.

Dielectric strength	40 kV/mm in DBP 17 kV/mm in tx oil
---------------------	---------------------------------------

Resistivity	1014 Ωcm
-------------	----------

Biological

Prestige 3D Compact trunking is resistant to vermin and termites.

Workability

Prestige 3D Compact trunking is lightweight and can readily be cut and drilled to suit installation needs with hand tools.

Durability

Prestige 3D Compact trunking is stable and will maintain its performance characteristics in accordance with the terms and conditions described above.

Maintenance

Clip-on covers with optional screw fix and interchangeable accessories provide continuous accessibility for rewiring, extensions and modifications to an installation. Covers and accessories can be cleaned with a damp cloth and household detergent. The surface can be decorated with commercial paints if required.

* Based on 2008 consumption



Prestige 3D Compact Technical

Data Trunking System

Dimensions (mm)

Profiles

Compartment CSA mm²

1 = 742

2 = 1431

*(X) = 3035

Assembly

Dado = 1.20 Kg/m

Extended Dado = 1.35 Kg/m

Wall Thickness

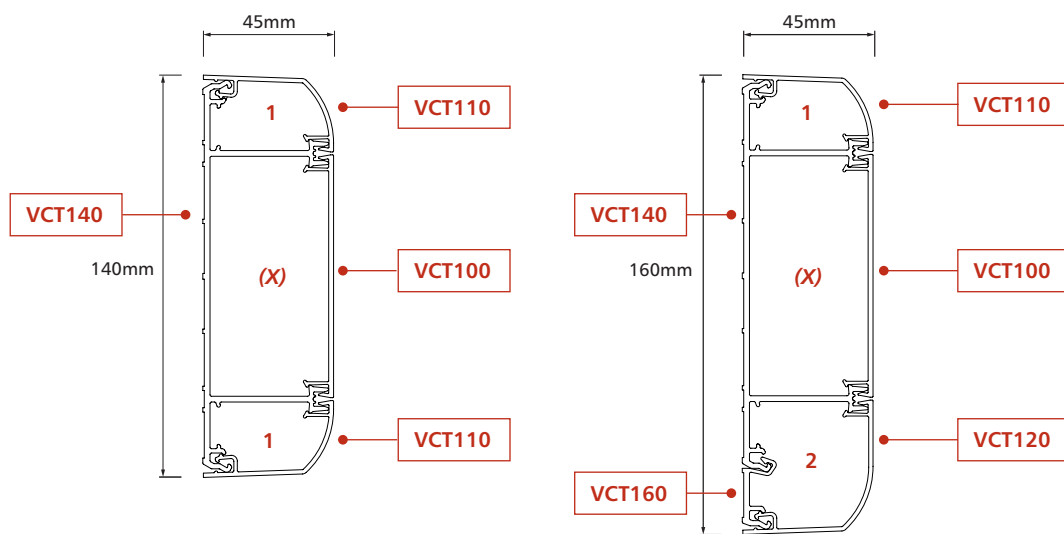
VCT100 = 1.7mm

VCT110 = 1.7mm

VCT120 = 1.7mm

VCT140 = 2.0mm

VCT160 = 2.0mm



DADO

EXTENDED DADO

CABLE CAPACITY								
Type of conductor	Size	Cable factor	Compartment 1		Compartment 2		Compartment (X)	
			Full Term CSA (mm ²)					
			742		1431		3035	
			Term at 45% fill (mm ²)					
333		643		1365				
Power cables			Number of cables at 45% fill					
PVC stranded	1.5mm ²	8.6	38	74	158			
	2.5mm ²	12.6	26	51	108			
	4mm ²	16.6	20	38	82			
	6mm ²	21.2	15	30	64			
Data cables			Number of cables at 45% fill (a) and full capacity (b)					
			a	b	a	b	a	b
Cat 5E UTP	5.5mm dia.	30.2	11	24	21	47	45	100
Cat 5E STP	6.0mm dia.	36.0	9	20	17	39	37	84
Cat 6 UTP	6.5mm dia.	42.2	7	17	15	33	32	71
Cat 6 STP	7.0mm dia.	49.0	6	15	13	29	27	61

* Compartment (X) dimensions and capacity are given as guide only for instances where trunking is used for cable routing e.g. vertical drops/risers.

Prestige 3D Compact Technical

Data Trunking System

Component selection guide

Profile	End Cap
140mm	VCT143 WHI
160mm	VCT163 WHI

Profile	Internal Corner
140mm	VCT141 WHI
160mm	VCT161 WHI

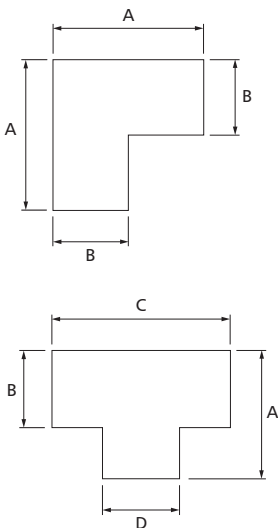
Profile	Flat Angle Up	Flat Angle Down
140mm	VCT145 WHI	VCT145 WHI
160mm	VCT165 WHI	VCT166 WHI

Profile	Joint Cover
140mm	VCT144 WHI
160mm	VCT164 WHI

Profile	External Corner
140mm	VCT142 WHI
160mm	VCT162 WHI

Profile	Flat Tee Up	Flat Tee Down
140mm	VCT147 WHI	VCT147 WHI
160mm	VCT167 WHI	

Flat angles and tees



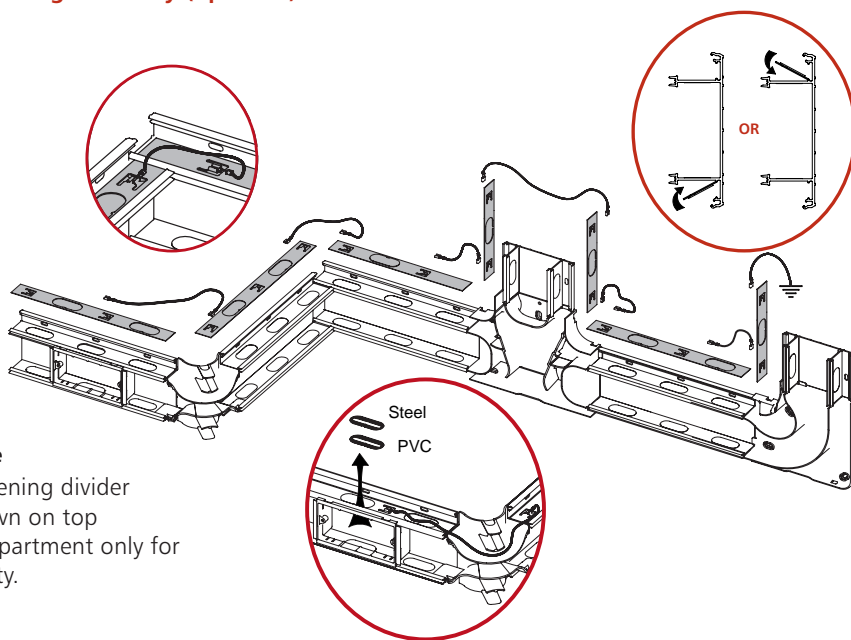
FABRICATED ANGLES AND TEES DIMENSIONS (mm)					
LIST NO	DESCRIPTION	A	B	C	D
VCT145 WHI	Flat Angle 140 (Dado)	190mm	140mm		
VCT147 WHI	Flat Tee 140 (Dado)	200mm	140mm	235mm	140mm
VCT165 WHI	Flat Angle – Up 160 (Extended Dado)	215mm	160mm		
VCT166 WHI	Flat Angle – Down 160 (Extended Dado)	215mm	160mm		
VCT167 WHI	Flat Tee – Up 160 (Extended Dado)	220mm	160mm	235mm	140mm



Prestige 3D Technical

Data Trunking System

Screening assembly (optional)



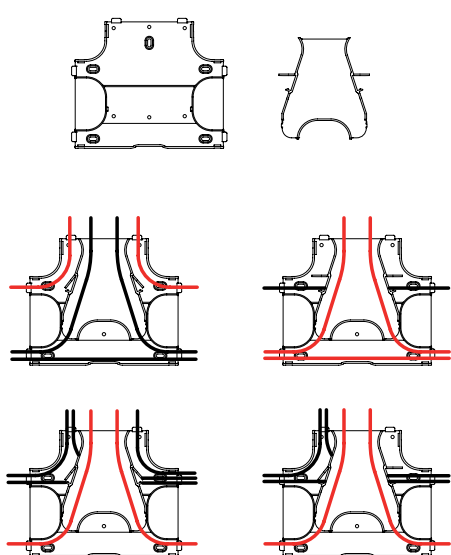
Note
Screening divider shown on top compartment only for clarity.

PRODUCT IDENTIFICATION	
VP30 / VCT30 Screening Divider 1.5m (steel)	
VX31 Screening Cable 300mm	
VX32 Screening Braid 500mm	
VX33 Screening Cable 500mm plus	

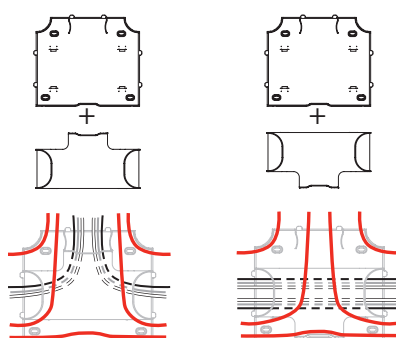
Flat Tee Bridge

The Flat Tee's bridge can be fitted in two positions increasing the versatility of cable runs whilst maintaining the correct separation and Cat 6 compatibility.

Prestige 3D Compact



Prestige 3D Dado and Skirting



Prestige 3D Antibac Blue Installation

When planning the installation establish the layout of your system, paying particular attention to:

- **Direction Changes**
- **Feed Positions**
- **Component Spacing**

The carrier components are not treated with the antibacterial additive. As such these must always be fixed onto a surface where they will not be touched once the installation is complete.

During the installation of Prestige 3D Antibac Blue no special treatment of the product is required. There is no need for an installer to wear sterile gloves, use sterile tools or undertake special training.

Once installed, the Prestige 3D Antibac Blue system carries a 10 year guarantee, the same as all MK Cable Management products, giving both the installer and specifier confidence and peace of mind. The unique addition of a fluorescent additive gives further confidence, clearly identifying the product as Prestige 3D Antibac Blue. A bright blue glow under UV light indicates the antibacterial additive is present, a dull purple glow under UV light indicates standard PVCu.

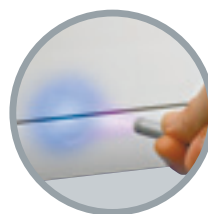


When maintaining the product after installation, no special treatment is required. The antibacterial additive depends on intimate contact between surfaces of the trunking and the user, so any barriers such as dirt or grime will reduce or negate the antibacterial effect. However, the exterior of the trunking can be cleaned very simply using a damp cloth with a mild detergent, which must be thoroughly wiped off. Alternatively the trunking can also be cleaned using Ultraviolet light. Prestige 3D Antibac Blue is not intended to replace standard cleaning regimes. It is an additional protection which can only operate efficiently if the surfaces are kept free of dirt and grime. Before hand-over to the client the entire trunking run must be thoroughly cleaned as described in the product installation guide.

Prestige 3D Antibac Blue product and packaging is recyclable. At the end of its useful life it should be recycled where facilities exist.

The additive used in Prestige 3D Antibac Blue is registered with the Environmental Protection Agency (EPA) and is compliant with the European Biocidal Products Directive (BPD).

Prestige 3D Antibac Blue is easily distinguishable from standard Prestige 3D, it has a different protective film and has a unique patent pending fluorescence under UV light which glows bright blue.



Prestige 3D Antibac Blue

MK Electric

Tech Helpline Tel 01268 563720

Web www.mkelectric.co.uk

UK The Arnold Centre Paycocke Road Basildon Essex SS14 3EA United Kingdom

Customer Service Tel 01268 563404

Customer Service Fax 01268 563405

E-mail mkorderenquiries@honeywell.com

Ireland Unit 55 Park West Industrial Park Nangor Road Dublin 12 Republic of Ireland

Customer Service Tel +353 (0)1429 6500

Customer Service Fax +353 (0)1429 6501

E-mail ireland.sales@honeywell.com