



## range introduction

Premier is a modern integrated trunking system which provides the means to distribute power, data and telecom services around buildings.

A wide range of snap fit mouldings, including reducers, make it easy to run continuous lengths of trunking as cable feeders and, where required, to provide dado trunking with the necessary power, data and telecom outlets. The MK Aspect and Logic Plus accessory ranges complement the style and finish of Premier Trunking.

## feature benefits

**Simple, clean lines**

Stylish and unobtrusive finish

**Wide range of integrated components**

Maximises versatility in application

**Clip-on covers provide continuous access for wiring modifications**

Easy to assemble and install

**Data corners provide 32mm radius compatible with Cat 5e data cables**

Enables data cables to perform to their maximum capabilities (NCT 1050 only)

**Tapered joints provide complete protection at junctions masking cut ends**

Uniform and neat finish to any installation

**Made from 100% PVCu**

Premier is both robust and easily workable on site

**All extrusions manufactured from 90% recycled material\***

\* Based on 2008 consumption.

**SUPERMOON**

Powering modern work and life

Order at 訂貨熱線 :

香港批發/分銷 T (852) 2781 2855

澳門批發/分銷 T (853) 2822 2751

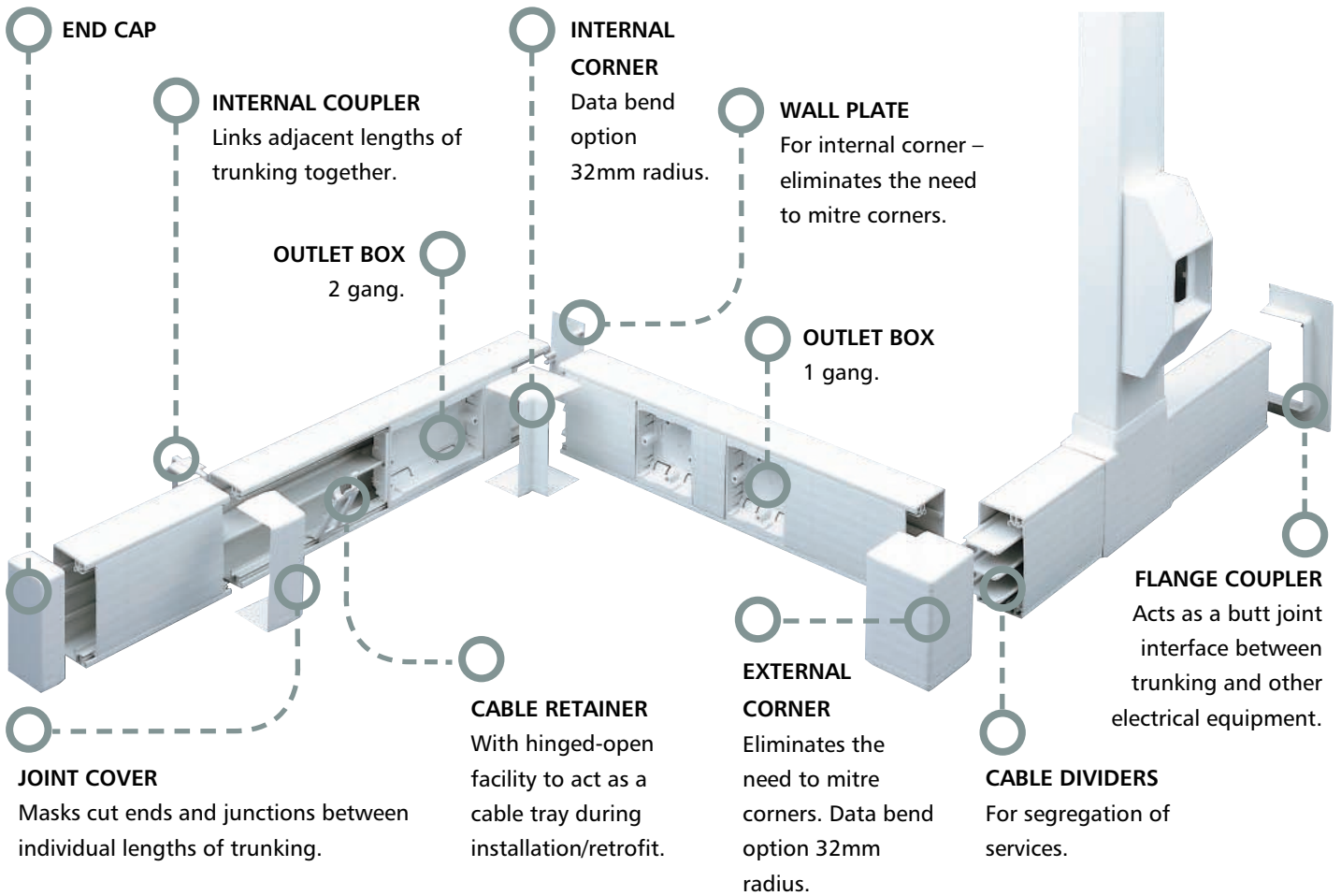
工程/商業項目 T (852) 2691 9166

E enquiry@supermoon.hk

www.supermoon.hk

technical hotline +44 (0)1268 563720

perimeter and distribution | cable management



Components are available in a choice of over 180 RAL paint colours. Specify your choice when ordering.



Reducers are used to connect different sizes of trunking.



Adaptors provide integration with Ega Mini and Communication Trunking for local distribution.



Moulded flat cross available for all distribution trunking.



## Trunking

MATERIAL: PVCu  
COLOUR: White

3 METRE  
LENGTHS2 METRE  
LENGTHS

SPARE  
TRUNKING LID  
3 METRE  
LENGTHS

Internal  
Coupler

MOULDED

Joint  
Cover

MOULDED



50 x 50mm	<b>NCT/5050</b>	<b>12m</b>	<b>NCT/5050 D1*</b>	<b>12m</b>	<b>NCT/50LID</b>	<b>12m</b>	<b>NCI/5050</b>	<b>5</b>	<b>NJC/5050</b>	<b>10</b>
75 x 50mm	<b>NCT/7550</b>	<b>12m</b>	<b>NCT/7550 D1*</b>	<b>12m</b>	<b>NCT/50LID</b>	<b>12m</b>	<b>NCI/7550</b>	<b>5</b>	<b>NJC/7550</b>	<b>10</b>
75 x 75mm	<b>NCT/7575</b>	<b>12m</b>	<b>NCT/7575 D1*</b>	<b>8m</b>	<b>NCT/75LID</b>	<b>12m</b>	<b>NCI/7575</b>	<b>5</b>	<b>NJC/7575</b>	<b>10</b>
100 x 40mm	<b>NCT/1040</b>	<b>12m</b>	<b>NCT/1040 D1*</b>	<b>8m</b>	<b>NCT/100LID</b>	<b>12m</b>	<b>NCI/1040</b>	<b>5</b>	<b>NJC/1040</b>	<b>5</b>
100 x 50mm	<b>NCT/1050</b>	<b>12m</b>	<b>NCT/1050 D1*</b>	<b>8m</b>	<b>NCT/100LID</b>	<b>12m</b>	<b>NCI/1050</b>	<b>5</b>	<b>NJC/1050</b>	<b>5</b>
100 x 100mm	<b>NCT/1010</b>	<b>12m</b>	<b>NCT/1010 D1*</b>	<b>8m</b>	<b>NCT/100LID</b>	<b>12m</b>	<b>NCI/1010</b>	<b>5</b>	<b>NJC/1010</b>	<b>5</b>

\* 2 metre lengths are available  
for NON UK markets.

External  
Corner

MOULDED

WITH  
DATA CORNER  
MOULDED

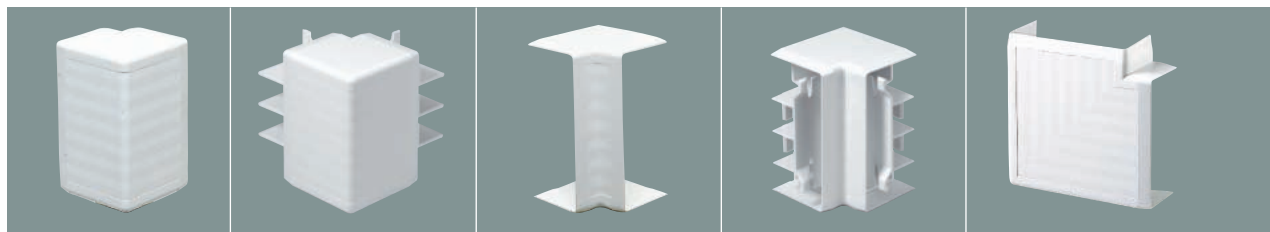
Internal  
Corner

MOULDED

WITH  
DATA CORNER  
MOULDED

## Flat Angle

MOULDED



50 x 50mm	<b>NAE/5050</b>	<b>2</b>		<b>NAI/5050</b>	<b>2</b>		<b>NAF/5050</b>	<b>2</b>
75 x 50mm	<b>NAE/7550</b>	<b>2</b>		<b>NAI/7550</b>	<b>2</b>		<b>NAF/7550</b>	<b>2</b>
75 x 75mm	<b>NAE/7575</b>	<b>2</b>		<b>NAI/7575</b>	<b>2</b>		<b>NAF/7575</b>	<b>2</b>
100 x 40mm	<b>NAE/1040</b>	<b>2</b>		<b>NAI/1040</b>	<b>2</b>		<b>NAF/1040</b>	<b>2</b>
100 x 50mm	<b>NAE/1050</b>	<b>2</b>	<b>NDAE/1050</b>	<b>2</b>	<b>NAI/1050</b>	<b>2</b>	<b>NDAI/1050</b>	<b>2</b>
100 x 50mm	<b>NFAE/1050*</b>	<b>2</b>		<b>NFAI/1050*</b>	<b>2</b>		<b>NFAF/1050*</b>	<b>2</b>
100 x 100mm	<b>NAE/1010*</b>	<b>1</b>		<b>NAI/1010*</b>	<b>1</b>		<b>NAF/1010*</b>	<b>1</b>

\* Fabricated.

Data corner provides  
32mm (1 1/4" or 1.25")  
radius compatible with  
Cat 5e data cables.

\* Fabricated.

Data corner provides  
32mm (1 1/4" or 1.25")  
radius compatible with  
Cat 5e data cables.

\* Fabricated.

technical hotline +44 (0)1268 563720

perimeter and distribution | cable management

## Cable Retainer

MOULDED

## Cable Divider

3 METRE LENGTHS

## End Cap

UNIVERSAL FOR USE AT EITHER END MOULDED

## Underbox Divider

1 GANG 2 GANG  
USED TO MAINTAIN CABLE SEGREGATION BEHIND SOCKET OUTLETS



NBP/50	10	NVS/50	36m	NEP/5050	5		
NBP/75	10	NVS/50	36m	NEP/7550	5		
NBP/75	10	NVS/75	36m	NEP/7575	5		
NBP/100	10	NVS/40	36m	NEP/1040	5	NUB/401	10
NBP/100	10	NVS/50	36m	NEP/1050	5	NUB/501	10
NBP/100	10	NVS/100	36m	NEP/1010	5	NUB/1001	10
						NUB/402	10
						NUB/502	10
						NUB/1002	10

## Flat Tee

WITH DATA CORNER MOULDED

MOULDED

## Double Set

WITH DATA CORNER MOULDED

FABRICATED

## Internal Tee

FABRICATED

## External Tee

FABRICATED



	NTF/5050	2		NMD/5050	2	NTI/5050	1	NTE/5050	1
	NTF/7550	2				NTI/7550	1	NTE/7550	1
	NTF/7575	2				NTI/7575	1	NTE/7575	1
	NTF/1040	2				NTI/1040	1	NTE/1040	1
NDAF/1050	2	NTF/1050	2	NDTF/1050	2	NTI/1050	1	NTE/1050	1
	NFTF/1050*	2							
	NTF/1010*	1				NTI/1010	1	NTE/1010	1

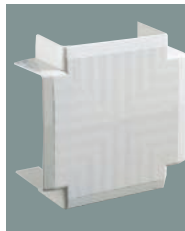
Data corner provides 32mm (1 1/4" or 1.25") radius compatible with Cat 5e data cables.

\* Fabricated.

Data corner provides 32mm (1 1/4" or 1.25") radius compatible with Cat 5e data cables.

### Flat Cross

MOULDED



### Flange Coupler

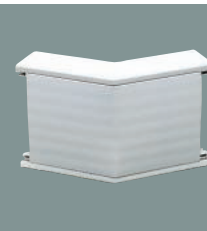


### Angles

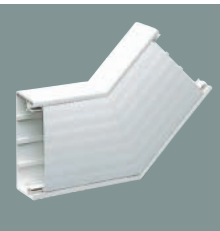
INTERNAL  
135°  
FABRICATED



EXTERNAL  
135°  
FABRICATED



FLAT  
135°  
FABRICATED



50 x 50mm	<b>NCU/5050</b>	<b>1</b>	<b>NFC/5050</b>	<b>1</b>	<b>NMI/5050</b>	<b>1</b>	<b>NMO/5050</b>	<b>1</b>	<b>NMT/5050</b>	<b>1</b>
75 x 50mm	<b>NCU/7550</b>	<b>1</b>	<b>NFC/7550</b>	<b>1</b>	<b>NMI/7550</b>	<b>1</b>	<b>NMO/7550</b>	<b>1</b>	<b>NMT/7550</b>	<b>1</b>
75 x 75mm	<b>NCU/7575</b>	<b>1</b>	<b>NFC/7575</b>	<b>1</b>	<b>NMI/7575</b>	<b>1</b>	<b>NMO/7575</b>	<b>1</b>	<b>NMT/7575</b>	<b>1</b>
100 x 40mm	<b>NCU/1040</b>	<b>1</b>	<b>NFC/1040</b>	<b>1</b>	<b>NMI/1040</b>	<b>1</b>	<b>NMO/1040</b>	<b>1</b>	<b>NMT/1040</b>	<b>1</b>
100 x 50mm	<b>NCU/1050</b>	<b>1</b>	<b>NFC/1050</b>	<b>1</b>	<b>NMI/1050</b>	<b>1</b>	<b>NMO/1050</b>	<b>1</b>	<b>NMT/1050</b>	<b>1</b>
100 x 100mm	<b>NCU/1010</b>	<b>1</b>	<b>NFC/1010</b>	<b>1</b>	<b>NMI/1010</b>	<b>1</b>	<b>NMO/1010</b>	<b>1</b>	<b>NMT/1010</b>	<b>1</b>

### MCB/RCD Housings



**NMH/100**

**1**



**VTS/KMH/1 WHI**

**1**

VTS/KMH includes cover.  
Accessory not provided.

### Mini Trunking Adaptor

FOR YEA AND  
CMA ADAPTORS



**NYT/100**

**10**

### Partition Wall Cover

FOR TRUNKING  
100MM X 40MM



**NWC/1040**

**5**

### Accessory Boxes

ONE GANG  
25 & 35MM  
DEEP FOR  
100MM WIDE  
TRUNKING



**VTS/6025 WHI**

**25**

**VTS/6035 WHI**

**25**

35mm deep boxes are only  
for use in 100 x 50mm and  
100 x 100mm trunking.

TWO GANG  
25 & 35MM  
DEEP FOR  
100MM WIDE  
TRUNKING



**VTS/7025 WHI**

**10**

**VTS/7035 WHI**

**10**

35mm deep boxes are only  
for use in 100 x 50mm and  
100 x 100mm trunking.

technical hotline +44 (0)1268 563720

perimeter and distribution | cable management

## Wall Plates

## Reducers

FOR INTERNAL  
CORNERS  
MOULDED

50 X 50MM  
FABRICATED

75 X 50MM  
FABRICATED

75 X 75MM  
FABRICATED

100 X 40MM  
FABRICATED

100 X 50MM  
FABRICATED



<b>NWP/5050</b>	<b>5</b>								
<b>NWP/7550</b>	<b>5</b>	<b>NTR/21</b>	<b>1</b>						
<b>NWP/7575</b>	<b>5</b>	<b>NTR/31</b>	<b>1</b>	<b>NTR/32</b>	<b>1</b>				
<b>NWP/1040</b>	<b>5</b>								
<b>NWP/1050</b>	<b>5</b>	<b>NTR/41</b>	<b>1</b>	<b>NTR/42</b>	<b>1</b>		<b>NTR/45</b>	<b>1</b>	
<b>NWP/1010</b>	<b>5</b>	<b>NTR/61</b>	<b>1</b>	<b>NTR/62</b>	<b>1</b>	<b>NTR/63</b>	<b>1</b>	<b>NTR/65</b>	<b>1</b>
								<b>NTR/64</b>	<b>1</b>

THREE GANG  
28MM & 35MM  
DEEP FOR  
100MM WIDE  
TRUNKING

ONE GANG  
25 & 35MM  
DEEP  
FLUSH PILLARS  
(NON UK)

## Mounting Frames

## Accessory Spacer



<b>VTS/8028 WHI</b>	<b>5</b>	<b>NCT/1G25 WHI</b>	<b>25</b>	<b>VTS/6000 WHI</b>	<b>10</b>	<b>NSP/100</b>	<b>10</b>
<b>VTS/8035</b>	<b>5</b>	25MM DEEP		1 GANG		ACCESSORY SPACER	
<b>K3716</b>	<b>100</b>	<b>NCT/1G35 WHI</b>	<b>25</b>	ACCESSORY MOUNTING FRAME		FOR 100MM WIDE	
BOX EARTH TERMINAL		35MM DEEP		<b>VTS/7000 WHI</b>	<b>5</b>	TRUNKING	
				2 GANG			
				ACCESSORY MOUNTING FRAME			