



## range introduction

Commando offers a comprehensive range of industrial plugs, connectors, socket outlets, appliance inlets, Combi and Modular-Combi units.

The Commando range is designed to meet all relevant European and British Standards, whilst offering an excellent choice of ingress protected ratings. The Commando range offers remarkable impact strength by way of its PBT (Polybutylene Terephthalate) or Nylon (Polyamide PA) insulated or aluminium housing\*. Outstanding temperature performance and good resistance to most chemicals make it ideal for the most arduous applications. Contact pins and sleeves are of solid brass with stainless steel springs to keep contacts free of dirt and to ensure constant contact pressure.

## feature benefits

### Reliability

Features like the calibrated contact sleeves with stainless steel springs, brass screws in brass contacts, and the double earthing screws – all mean that this plug or socket will perform better and longer in difficult conditions

### Ergonomic design

All edges and corners are rounded to remove sharp edges. Cable protection is improved. New design offers a better and more comfortable grip for connection / disconnection

### Cable protection

The unified seal and cable protector forms a convex dome that prevents the plug from fastening on objects or collecting debris when dragged

### Easy wiring

All screws are backed out and retained. Contact carrier marked front and back for easy and correct wiring. Hinged cable clamp and twin contact earth screws

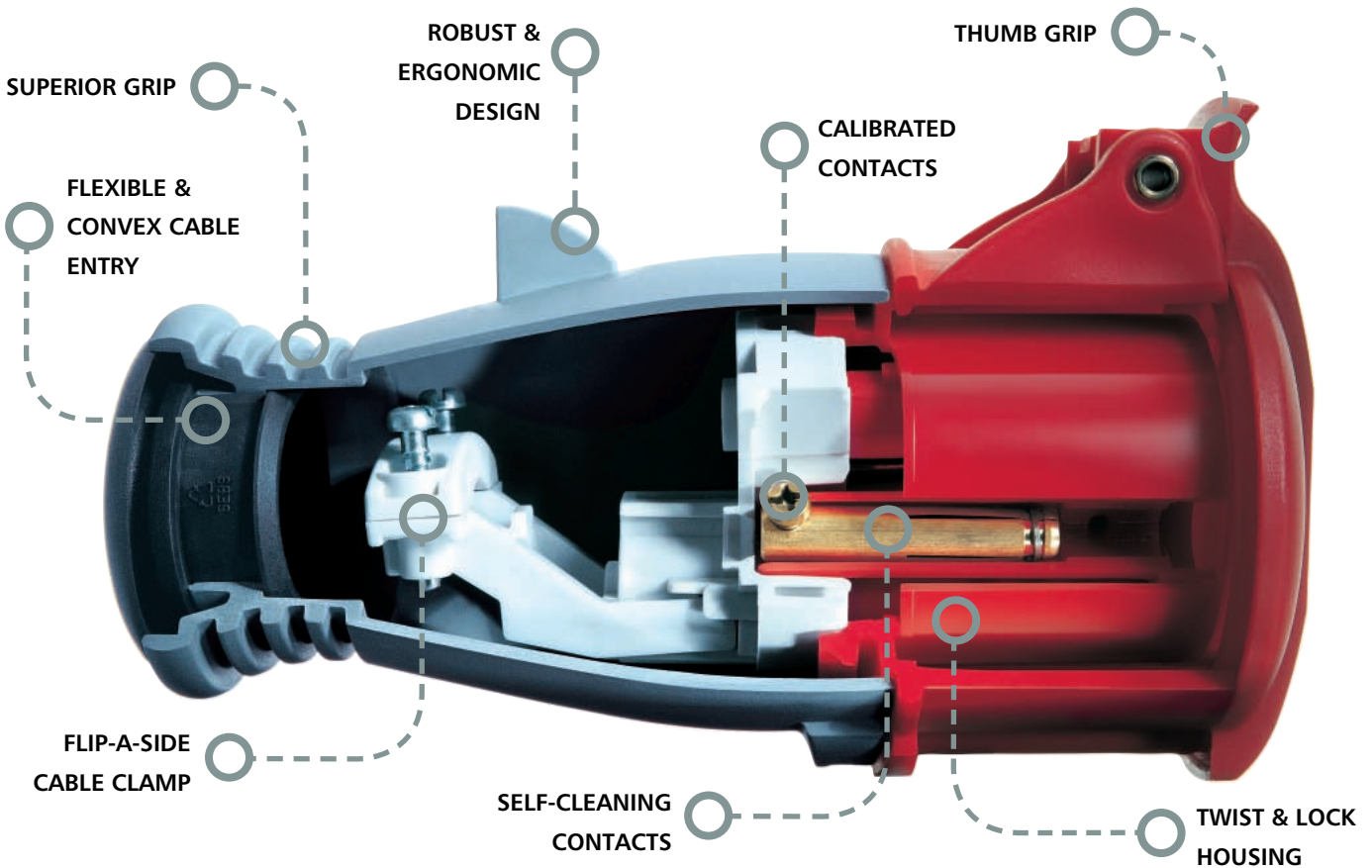
### Outstanding Temperature Performance

Successful operation guaranteed between -25°C and 55°C

\* 16A and 32A IP44 plug, connector and socket outlet products have housings manufactured from PA

technical hotline +44 (0)1268 563720

ingress protected | wiring devices



### FIT IT... FORGET IT

Most reliable industrial plug and socket range.

#### TWIST IT

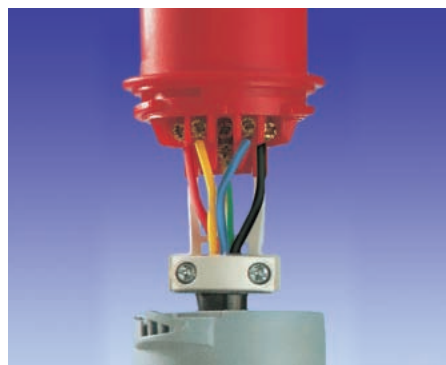
Split housing with twist-and-lock closure needs no tool, and means a faster and safe assembly. A tool is needed to disassemble it.

#### WIRE IT

Quick and easy wiring. All screws face the user and are backed out and retained. Contact carrier marked front and back for easy and correct wiring. Hinged cable clamp and twin contact earth screws.

#### PUSH IT

Push the plug and socket together for a tight smooth contact. The earth contact 'makes first and breaks last'.



**IP 44  
SPLASHPROOF  
100 - 130V  
50 - 60 Hz**

### Plugs



### Connectors



### Socket Outlets ANGLED

**SURFACE**



**SURFACE – LOOP IN**



**STRAIGHT**

**PANEL MOUNTING**



Amps Pin. Earth Hour Pos

Amps	Pin. Configuration	Earth Pos	Plugs	Connectors	Socket Outlets SURFACE	Socket Outlets SURFACE – LOOP IN	Socket Outlets STRAIGHT PANEL MOUNTING
16	2P+E	4	<b>K9000 YEL</b>	<b>K9100 YEL</b>	<b>K9200 YEL</b>	<b>K13200 YEL</b>	<b>K9400 YEL</b>
16	3P+E	4	<b>K9005 YEL</b>	<b>K9105 YEL</b>	<b>K9205 YEL</b>		<b>K9405 YEL</b>
16	3P+N+E	4	<b>K9013 YEL</b>	<b>K9113 YEL</b>	<b>K9213 YEL</b>		<b>K9413 YEL</b>
32	2P+E	4	<b>K9032 YEL</b>	<b>K9132 YEL</b>	<b>K9232 YEL</b>	<b>K13232 YEL</b>	<b>K9432 YEL</b>
32	3P+E	4	<b>K9035 YEL</b>	<b>K9135 YEL</b>	<b>K9235 YEL</b>		<b>K9435 YEL</b>
32	3P+N+E	4	<b>K9043 YEL</b>	<b>K9142 YEL</b>	<b>K9239 YEL</b>		

Fitted with cable entry gland.  
BS EN 60309

Fitted with cable entry gland.  
BS EN 60309

**16A** Top conduit (M20) or rear cable entry, complete with blanking plug.  
**32A** Top conduit (M25) or rear cable entry, complete with blanking plug.  
BS EN 60309

Suitable for top entry 2 x Ø25.  
Fitted with terminals for Loop In 2 x 10mm².  
BS EN 60309

All flanges have the same fixing centres and outside dimensions to assist panel builders.  
Minimised flange option available (see page 240).  
BS EN 60309

**IP 67  
WATERTIGHT  
100 - 130V  
50 - 60 Hz**

### Plugs



### Connectors



### Socket Outlets ANGLED

**SURFACE**



**SURFACE – LOOP IN**



**PANEL MOUNTING**



Amps Pin. Earth Hour Pos

Amps	Pin. Configuration	Earth Pos	Plugs	Connectors	Socket Outlets SURFACE	Socket Outlets SURFACE – LOOP IN	Socket Outlets PANEL MOUNTING
16	2P+E	4	<b>K9023 YEL</b>	<b>K9123 YEL</b>	<b>K9193 YEL</b>	<b>K13023 YEL</b>	<b>K9802 YEL</b>
32	2P+E	4	<b>K9053 YEL</b>	<b>K9155 YEL</b>	<b>K9761 YEL</b>	<b>K13053 YEL</b>	<b>K9865 YEL</b>
63	2P+E	4	<b>K9294 YEL</b>	<b>K9855 YEL</b>			

Suitable for flexible cable only. 63A:with external clamp.  
BS EN 60309

Suitable for flexible cable only. 63A:with external clamp.  
BS EN 60309

Suitable for top entry 2 x Ø25 or bottom entry 2 x Ø20.  
Will accept FL13 flange at top.  
BS EN 60309

Suitable for top entry 2 x Ø25  
BS EN 60309

All flanges have the same fixing centres and outside dimensions to assist panel builders.  
BS EN 60309

**IP 44  
SPLASHPROOF  
100 - 130V  
50 - 60 Hz  
16 Amps  
2P+E**

### Socket Outlets

**TWIN**

**SURFACE**

Prewired **K13143 YEL**    Unwired **K13043 YEL**



Suitable for top entry 2 x Ø25 2 x Ø38  
Bottom entry 3 x 47,5mm  
BS EN 60309

63A plugs and inlets include pilot pins.

63A connectors and sockets with pilot sleeves are available to special order.

All products are available in minimum order quantity of one except K9000 and K9100 (which have a minimum order quantity of 10).

Photographs feature the most representative products.  
Design changes may occur (over different current ratings) from one product to another.

technical hotline +44 (0)1268 563720

ingress protected | wiring devices

## Socket Outlets

ANGLED

PANEL MOUNTING


**K9767 YEL**
**K9769 YEL**

16/32A new range has different fixing centres to old range.

Old range is available for limited period. See technical section for details.

BS EN 60309

## Switchsocket Outlets

ANGLED

SURFACE


**K9912 YEL**

With 2 x M20 threaded conduit entries and 1 x 18mm. knockouts in both top and bottom.

Supplied with blanking plugs/cable entry.

BS EN 60309

ANGLED  
INTERLOCKED  
SURFACE


**K9600 YEL**  
**K9606 YEL**
**K9632 YEL**  
**K9638 YEL**

Switch can be locked in open or closed position.

BS EN 60309

SURFACE


**K13600 YEL**
**K13632 YEL**

Suitable for top entry 2 x Ø25.

Switch can be locked in open position. Or closed position by removing the tab.

BS EN 60309

SURFACE


**K9609 YEL**
**K9642 YEL**

With 25mm knockout at top.

Will also accept FL13 flange (top).

Bottom entry M25.

BS EN 60309

## Appliance Inlets

ANGLED

SURFACE


**K9700 YEL**
**K9709 YEL**
**K9732 YEL**

16A Top conduit (M20) or rear cable entry, complete with blanking plug.

32A Top conduit (M25) or rear cable entry, complete with blanking plug.

BS EN 60309

## Switchsocket Outlets

ANGLED

INTERLOCKED

SURFACE


**K9356 YEL**

With 32mm knockouts top and bottom.

Will also accept FL13 flange (top).

Switch can be locked in open position. In closed position by removing the tab.

BS EN 60309

## Switchsocket Outlets

SURFACE

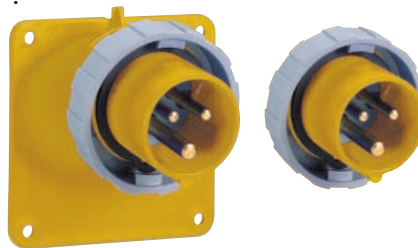

**K13623 YEL**  
**K13653 YEL**

Suitable for top entry 2 x Ø25.

Switch can be locked in open position. In closed position by removing the tab.

BS EN 60309

## Appliance Inlet Panels


**K9780 YEL**  
**K9784 YEL**

BS EN 60309

BS EN 60309

**K9788 YEL**

See page 240 for details of spare or alternative FL type flanges.

IP 44  
SPLASHPROOF  
200 - 250V  
50 - 60 Hz

## Plugs



## Connectors

Socket Outlets  
ANGLED

## SURFACE



## SURFACE-LOOP IN

STRAIGHT  
PANEL  
MOUNTING

Amps Pin. Earth  
Config- Hour  
uration Pos

Amps	Pin. Config-uration	Earth Hour Pos	Plugs	Connectors	Socket Outlets ANGLED SURFACE	Socket Outlets SURFACE-LOOP IN	Socket Outlets STRAIGHT PANEL MOUNTING
16	2P+E	6	<b>K9001 BLU</b>	<b>K9101 BLU</b>	<b>K9201 BLU</b>	<b>K13201 BLU</b>	<b>K9401 BLU</b>
16	3P+E	9	<b>K9006 BLU</b>	<b>K9106 BLU</b>	<b>K9206 BLU</b>		<b>K9406 BLU</b>
16	3P+N+E	9	<b>K9014 BLU</b>	<b>K9114 BLU</b>	<b>K9214 BLU</b>		<b>K9414 BLU</b>
32	2P+E	6	<b>K9033 BLU</b>	<b>K9133 BLU</b>	<b>K9233 BLU</b>	<b>K13233 BLU</b>	<b>K9433 BLU</b>
32	3P+E	9	<b>K9036 BLU</b>	<b>K9136 BLU</b>	<b>K9236 BLU</b>		
32	3P+N+E	9	<b>K9044 BLU</b>	<b>K9143 BLU</b>	<b>K9240 BLU</b>		<b>K9444 BLU</b>
63	2P+E	6	<b>K9063 BLU</b>	<b>K9172 BLU</b>	<b>K9274 BLU</b>		<b>K9472 BLU</b>
63	3P+E	9	<b>K9065 BLU</b>	<b>K9164 BLU</b>	<b>K9264 BLU</b>		

**16A/32A** Fitted with cable entry gland.

**63A** Fitted with cable entry gland.

Thread size M48.

BS EN 60309

**16A/32A** Fitted with cable entry gland.

**63A** Fitted with cable entry gland.

Thread size M48.

BS EN 60309

**16A** Top conduit (M20) or rear cable entry, complete with blanking plug.

**32A** Top conduit (M25) or rear cable entry, complete with blanking plug.

**63A** Top conduit (M32) or rear cable entry, complete with blanking plug.

BS EN 60309

Suitable for top entry 2 x Ø25.

Fitted with terminals for Loop In 2 x 10mm<sup>2</sup>.

BS EN 60309

**16/32A** All flanges have the same fixing centres and outside dimensions to assist panel builders.

Minimised flange option available (see page 240).

BS EN 60309

IP 67  
WATERTIGHT  
200 - 250V  
50 - 60 Hz

## Plugs



## Connectors

Socket Outlets  
ANGLED

## SURFACE



## SURFACE - LOOP IN



## STRAIGHT

## PANEL MOUNTING



Amps Pin. Earth  
Config- Hour  
uration Pos

Amps	Pin. Config-uration	Earth Hour Pos	Plugs	Connectors	Socket Outlets ANGLED SURFACE	Socket Outlets SURFACE-LOOP IN	Socket Outlets STRAIGHT PANEL MOUNTING
16	2P+E	6	<b>K9024 BLU</b>	<b>K9124 BLU</b>	<b>K9194 BLU</b>	<b>K13024 BLU</b>	
32	2P+E	6	<b>K9054 BLU</b>	<b>K9156 BLU</b>	<b>K9762 BLU</b>	<b>K13054 BLU</b>	
63	2P+E	6	<b>K9298 BLU</b>	<b>K9856 BLU</b>	<b>K9857 BLU</b>		<b>K9828 BLU</b>
63	3P+E	9					
125	2P+E	6	<b>K9099 BLU</b>	<b>K9189 BLU</b>		<b>K9190 BLU</b>	<b>K9483 BLU</b>

Suitable for flexible cable only 63A and 125A. With external clamp.

BS EN 60309

Suitable for flexible cable only 63A and 125A. With external clamp.

BS EN 60309

Suitable for top entry 2 x Ø25 or bottom entry 2 x Ø20.

Will accept FL13 flange at top.

BS EN 60309

**16/32A** Suitable for top entry 2 x Ø25

**125A** 2 x 23/47mm knockouts top and bottom.

BS EN 60309

IP 44  
SPLASHPROOF  
200 - 250V  
50 - 60 Hz  
16 Amps  
2P + E

Socket Outlets  
ANGLED TWIN

## SURFACE

Prewired Unwired

**K13144 BLU K13044 BLU**



Suitable for top entry 2 x Ø25 / 2 x Ø38

Bottom entry 3 x 47.5mm

BS EN 60309

63/125A plugs and inlets include pilot pins.

63A connectors and sockets with pilot sleeves are available to special order.

125A Switchsocket interlocked outlets with pilot sleeves are available to special order.

All products are available in minimum order quantity of one except K9001 and K9101 which have minimum order quantities of 10.

Photographs feature the most representative products.

Design changes may occur (over different current ratings) from one product to another.

technical hotline +44 (0)1268 563720

ingress protected | wiring devices

## Socket Outlets

 ANGLED  
PANEL  
MOUNTING


**K9771 BLU**  
**K9772 BLU**  
**K9773 BLU**  
**K9774 BLU**  
  
**K9776 BLU**  
**K9544 BLU**

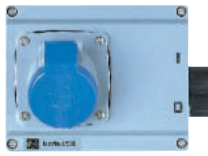
**16/32A** new range has different fixing centres to old range.

Old range is available for limited period. See technical section for details.

BS EN 60309

## Switchsocket Outlets

SURFACE



**K9913 BLU**  
**K9919 BLU**

With 2 x M20 threaded conduit entries and 1 x 18mm knockout in both top and bottom.

Supplied with blanking plugs/cable entry.

K9919 socket is straight.

K9913 socket is angled.

BS EN 60309

 ANGLED  
INTERLOCKED  
SURFACE


**K9601 BLU**  
**K9607 BLU**

**K9633 BLU**  
**K9639 BLU**

**K9664 BLU**

Switch can be locked in open or closed position

BS EN 60309

SURFACE



**K13601 BLU**

**K13633 BLU**

Suitable for top entry 2 x Ø25.

Switch can be locked in open position. Or closed position by removing the tab.

BS EN 60309

SURFACE



**K9610 BLU**

**K9643 BLU**

**K9306 BLU**

**K9311 BLU**

**16/32A** With 25mm knockout at top.

Will also accept FL13 flange (top).

Bottom entry M25.

BS EN 60309

## Appliance Inlets

 ANGLED  
SURFACE


**K9701 BLU**

**K9710 BLU**

**K9733 BLU**

**K9740 BLU**

**K9775 BLU**

**16A** Top conduit (M20) or rear cable entry, complete with blanking plug.

**32A** Top conduit (M25) or rear cable entry, complete with blanking plug.

**63A** Top conduit (M32) or rear cable entry, complete with blanking plug.

BS EN 60309

## Socket Outlets

ANGLED

PANEL MOUNTING



**K9803 BLU**  
**K9866 BLU**  
**K9825 BLU**

**16/32A** All flanges have the same fixing centres and outside dimensions to assist panel builders.

BS EN 60309

## Switchsocket Outlets

 ANGLED  
INTERLOCKED

SURFACE



**K13624 BLU**  
**K13654 BLU**

**K9688 BLU**

**16/32A** Suitable for top entry 2 x Ø25.

**125A** 2 x 23/47mm knockouts top and bottom.

Switch can be locked in open position. In closed position by removing the tab.

BS EN 60309

SURFACE



**K9324 BLU**  
**K9369 BLU**  
**K9355 BLU**

**16/32A** With 29mm knockout at top Will also accept FL13 flange (top).

Bottom entry M25.

**63A** With 32mm knockouts top and bottom. Will accept FL13 flange top and bottom.

BS EN 60309

## Appliance Inlets

ANGLED

SURFACE



**K9883 BLU**

2 x 23/47mm knockouts top and bottom.

BS EN 60309

SURFACE



**K9826 BLU**

Will accept FL13 flanges top and bottom.

BS EN 60309

## Appliance Inlet Panels



**K9781 BLU**

**K9785 BLU**

**K9789 BLU\***

**K9792 BLU\***

\*Note: 63 and 125A versions do not include a flange (See page 229 for photograph).

BS EN 60309

**IP 44  
SPLASHPROOF  
380 - 415V  
50 - 60 Hz**

## Plugs



## Connectors



## Socket Outlets

ANGLED

SURFACE



SURFACE – LOOP IN



STRAIGHT

PANEL MOUNTING



Amps Pin. Earth  
Config- Hour  
uration Pos

16	2P+E	9	<b>K9002 RED</b>	<b>K9102 RED</b>	<b>K9202 RED</b>		
16	3P+E	6	<b>K9007 RED</b>	<b>K9107 RED</b>	<b>K9207 RED</b>	<b>K13207 RED</b>	<b>K9407 RED</b>
16	3P+N+E	6	<b>K9015 RED</b>	<b>K9115 RED</b>	<b>K9215 RED</b>	<b>K13215 RED</b>	<b>K9415 RED</b>
32	3P+E	6	<b>K9037 RED</b>	<b>K9137 RED</b>	<b>K9237 RED</b>	<b>K13237 RED</b>	<b>K9437 RED</b>
32	3P+N+E	6	<b>K9045 RED</b>	<b>K9144 RED</b>	<b>K9241 RED</b>	<b>K13241 RED</b>	<b>K9445 RED</b>
63	3P+E	6	<b>K9066 RED</b>	<b>K9165 RED</b>	<b>K9265 RED</b>		<b>K9465 RED</b>
63	3P+N+E	6	<b>K9071 RED</b>	<b>K9170 RED</b>	<b>K9269 RED</b>		<b>K9470 RED</b>

**16A/32A** Fitted with cable entry gland.

**63A** Fitted with cable entry gland.

Thread size M48.

**16A/32A** Fitted with cable entry gland.

**63A** Fitted with cable entry gland.

Thread size M48.

**16A** Top conduit (M20) or rear cable entry, complete with blanking plug.

**32A** Top conduit (M25) or rear cable entry, complete with blanking plug.

**63A** Top conduit (M32) or rear cable entry, complete with blanking plug.

Suitable for top entry 2 x Ø25.

Fitted with terminals for Loop In 2 x 10mm<sup>2</sup>.

**16/32A** All flanges have the same fixing centres and outside dimensions to assist panel builders.

Minimised flange option available (see page 240).

**IP 67  
WATERTIGHT  
380 - 415V  
50 - 60 Hz**

## Plugs



## Connectors



## Socket Outlets

ANGLED

SURFACE

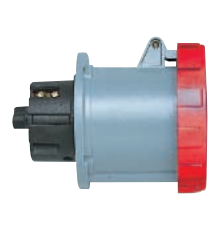


SURFACE – LOOP IN



STRAIGHT

PANEL MOUNTING



Amps Pin. Earth  
Config- Hour  
uration Pos

16	3P+E	6	<b>K9025 RED</b>	<b>K9125 RED</b>	<b>K9763 RED</b>	<b>K13025 RED</b>	
16	3P+N+E	6	<b>K9026 RED</b>	<b>K9126 RED</b>	<b>K9764 RED</b>	<b>K13026 RED</b>	
32	3P+E	6	<b>K9055 RED</b>	<b>K9157 RED</b>	<b>K9765 RED</b>	<b>K13055 RED</b>	
32	3P+N+E	6	<b>K9056 RED</b>	<b>K9158 RED</b>	<b>K9766 RED</b>	<b>K13056 RED</b>	
63	3P+E	6	<b>K9282 RED</b>	<b>K9842 RED</b>	<b>K9858 RED</b>		<b>K9812 RED</b>
63	3P+N+E	6	<b>K9292 RED</b>	<b>K9852 RED</b>	<b>K9859 RED</b>		<b>K9822 RED</b>
125	3P+E	6	<b>K9092 RED</b>	<b>K9182 RED</b>		<b>K9191 RED</b>	<b>K9481 RED</b>
125	3P+N+E	6	<b>K9097 RED</b>	<b>K9187 RED</b>		<b>K9192 RED</b>	<b>K9482 RED</b>

Suitable for flexible cable only. 63A and 125A have external clamp.

Suitable for flexible cable only. 63A and 125A have external clamp.

2 x 29/37mm knockouts (top), 1 x Ø29 and 1 x Ø23 knockout (bottom). Will accept FL13 flanges top and bottom.

**16/32A** Fitted with terminals for Loop In. Suitable for top entry 2 x Ø25.

**125A** Fitted with terminals for Loop In. 2 x 23/47mm knockouts top and bottom for looping 2 x 10mm<sup>2</sup>.

63/125A plugs and inlets include pilot pins. 63A connectors and sockets with pilot sleeves are available to special order. 125A Switchsocket interlocked outlets include pilot sleeves are available to special order. All products are available in minimum order quantity of one. Photographs feature the most representative products. Design changes may occur (over different current ratings) from one product to another.

technical hotline +44 (0)1268 563720

ingress protected | wiring devices

**Socket Outlets**  
 ANGLED

PANEL MOUNTING



<b>K9777 RED</b>
<b>K9778 RED</b>
<b>K9779 RED</b>
<b>K9751 RED</b>
<b>K9752 RED</b>
<b>K9565 RED</b>
<b>K9570 RED</b>

**16/32A** new range has different fixing centres to old range.  
 Old range is available for limited period. See technical section for details.

**Switchsocket Outlets**

SURFACE



<b>K9914 RED</b>
<b>K9920 RED</b>

With 2 x M20 threaded conduit entries and 1 x 18mm knockouts in both top and bottom.  
 Supplied with blanking plugs/cable entry.  
 K9914 is angled.  
 K9920 is straight.

**Switchsocket Outlets**

 ANGLED  
 INTERLOCKED  
 SURFACE


<b>K9602 RED</b>
<b>K9608 RED</b>
<b>K9634 RED</b>
<b>K9640 RED</b>
<b>K9665 RED</b>
<b>K9670 RED</b>

Switch can be locked in open or closed position.

SURFACE



<b>K13607 RED</b>
<b>K13615 RED</b>
<b>K13637 RED</b>
<b>K13641 RED</b>

Suitable for top entry 2 x Ø25.  
 Switch can be locked in open position. In closed position by removing the tab.

SURFACE



<b>K9611 RED</b>
<b>K9612 RED</b>
<b>K9644 RED</b>
<b>K9645 RED</b>
<b>K9312 RED</b>
<b>K9322 RED</b>

**16/32A**  
 With 25mm knockout at top. Will also accept FL13 flange top.  
 Bottom entry M25.

**Appliance Inlets**

 ANGLED  
 SURFACE


<b>K9706 RED</b>
<b>K9711 RED</b>
<b>K9736 RED</b>
<b>K9741 RED</b>
<b>K9768 RED</b>

**16A** Top conduit (M20) or rear cable entry, complete with blanking plug.  
**32A** Top conduit (M25) or rear cable entry, complete with blanking plug.  
**63A** Top conduit (M32) or rear cable entry, complete with blanking plug.

**Socket Outlets**  
 ANGLED

PANEL MOUNTING



<b>K9807 RED</b>
<b>K9815 RED</b>
<b>K9870 RED</b>
<b>K9873 RED</b>
<b>K9582 RED</b>
<b>K9592 RED</b>

**16/32A** All flanges have the same fixing centres and outside dimensions to assist panel builders.

**Switchsocket Outlets**  
 ANGLED INTERLOCKED

SURFACE



<b>K13625 RED</b>
<b>K13626 RED</b>
<b>K13655 RED</b>
<b>K13656 RED</b>

**16/32A** Suitable for top entry 2 x Ø25.  
**125A** 2 x 23/47mm knockouts top and bottom.  
 Switch can be locked in open position. In closed position by removing the tab.

SURFACE



<b>K9327 RED</b>
<b>K9330 RED</b>
<b>K9359 RED</b>
<b>K9362 RED</b>
<b>K9342 RED</b>
<b>K9352 RED</b>

**16/32A** With 29mm knockout at top will also accept FL13 flange at top. Bottom. Conduit entry M25.  
**63A**  
 With 32mm knockouts top and bottom. Will accept FL13 flange top and bottom.

**Appliance Inlets**  
 ANGLED

SURFACE



2 x 23/47mm knockouts top and bottom.

SURFACE



<b>K9829 RED</b>
<b>K9827 RED</b>

1 x M40/M32  
 2 x M20 top  
 2 x M40/M32  
 1 x M20 bottom  
 Will accept FL13 flanges top and bottom.

**Appliance Inlet Panels**


<b>K9782 RED</b>
<b>K9783 RED</b>
<b>K9786 RED</b>
<b>K9787 RED</b>
<b>K9790 RED*</b>
<b>K9791 RED*</b>
<b>K9793 RED*</b>

\*Note: 63 and 125A versions do not include a flange (See page 229 for photograph).

See page 240 for details of spare or alternative FL type flanges.



**IP 44  
SPLASHPROOF  
440 - 460V  
60 Hz**

**SUITABLE FOR  
MARINE  
INSTALLATIONS**

Amps	Pin. Configuration	Earth Hour Pos
------	--------------------	----------------

16	3P+E	11
16	3P+N+E	11
32	3P+E	11
32	3P+N+E	11

### Plugs



### Connectors



### Socket Outlet

ANGLED  
SURFACE



STRAIGHT  
PANEL MOUNTING



ANGLED  
PANEL MOUNTING



Fitted with cable entry gland.

Fitted with cable entry gland.

**16A** Top conduit (M20) or rear cable entry, complete with blanking plug.  
**32A** Top conduit (M25) or rear cable entry, complete with blanking plug.

All flanges have the same fixing centres and outside dimensions to assist panel builders. Minimised flange option available (see page 240).

**16/32A** new range has different fixing centres to old range. Old range is available for limited period. See technical section for details.

**IP 44  
SPLASHPROOF  
440 - 460V  
60 Hz**

**SUITABLE FOR  
MARINE  
INSTALLATIONS**

Amps	Pin. Configuration	Earth Hour Pos
------	--------------------	----------------

16	3P+E	11
16	3P+N+E	11
32	3P+E	11
32	3P+N+E	11

### Switchsocket Outlets

Interlocked  
SURFACE



Switch can be locked in open or closed position.

**IP 67  
WATERTIGHT  
440 - 460V  
60 Hz**

**SUITABLE FOR  
MARINE  
INSTALLATIONS**

Amps	Pin. Configuration	Earth Hour Pos
------	--------------------	----------------

63	3P+E	11
63	3P+N+E	11
125	3P+E	11

### Plugs



### Connectors



### Socket Outlets

ANGLED  
SURFACE



### Switchsocket Outlets

ANGLED INTERLOCKED  
SURFACE



SURFACE



Suitable for flexible cable only. With external clamp.

Suitable for flexible cable only. With external clamp.

2 x 23/47mm knockouts top and bottom.

2 x 23/47mm knockouts top and bottom.

With 32mm knockouts top and bottom.

63/125A plugs and inlets include pilot pins. 63A connectors and sockets with pilot sleeves are available to special order. 125A Switchsocket interlocked outlets with pilot sleeves are available to special order.

All products are available in minimum order quantity of one. Photographs feature the most representative products. Small design changes may occur (over different current ratings) from one product to another.

Switch can be locked in open position. In closed position by removing the tab.

Will accept FL13 flange top and bottom.

technical hotline +44 (0)1268 563720

ingress protected | wiring devices

**IP 44  
SPLASHPROOF  
480 - 500V  
50 - 60 Hz**

### Plugs



### Connectors



### Socket Outlets

ANGLED  
SURFACE



Amps	Pin. Config-uration	Earth Hour Pos
16	3P+E	7
32	3P+E	7

16	3P+E	7	<b>K9009 BLK</b>	<b>K9109 BLK</b>	<b>K9209 BLK</b>		
32	3P+E	7	<b>K9039 BLK</b>	<b>K9139 BLK</b>	<b>K9238 BLK</b>		

Fitted with cable entry gland.

Fitted with cable entry gland.

16A Top conduit (M20) or rear cable entry, complete with blanking plug.

32A Top conduit (M25) or rear cable entry, complete with blanking plug.

**IP 44  
SPLASHPROOF  
480 - 500V  
50 - 60 Hz**

### Switch Socket Outlets

ANGLED  
INTERLOCKED  
SURFACE



### Appliance Inlets

ANGLED  
SURFACE



Amps	Pin. Config-uration	Earth Hour Pos
16	3P+E	7
32	3P+E	7

16	3P+E	7	<b>K9604 BLK</b>	<b>K9707 BLK</b>			
32	3P+E	7	<b>K9636 BLK</b>	<b>K9737 BLK</b>			

Switch can be locked in open or closed position.

16A Top conduit (M20) or rear cable entry, complete with blanking plug.

32A Top conduit (M25) or rear cable entry, complete with blanking plug.

**IP 67  
WATERTIGHT  
480 - 500V  
50 - 60 Hz**

### Plugs



### Connectors



### Switchsocket Outlets

ANGLED  
INTERLOCKED  
SURFACE



Amps	Pin. Config-uration	Earth Hour Pos
63	3P+E	7

63	3P+E	7	<b>K9284 BLK</b>	<b>K9844 BLK</b>	<b>K9344 BLK</b>		
----	------	---	------------------	------------------	------------------	--	--

Suitable for flexible cable only. With external clamp

Suitable for flexible cable only. With external clamp

63A With 32mm knockouts top and bottom. Will accept FL13 flange top and bottom.

63/125A plugs and inlets include pilot pins. 63A connectors and sockets with pilot sleeves are available to special order. All products are available in a minimum order quantity of one. Design changes may occur (over different current ratings) from one product to another.

**IP 44  
SPLASHPROOF  
> 50V  
100 - 300 Hz**

### Plugs



### Connectors



### Socket Outlets

ANGLED  
SURFACE



STRAIGHT  
PANEL MOUNTING



ANGLED  
PANEL MOUNTING



Amps Pin. Configuration Earth Hour Pos

16 3P+E 10

**K9010 GRN**

**K9110 GRN**

**K9210 GRN**

**K9410 GRN**

**K9770 GRN**

Fitted with cable entry gland.

Fitted with cable entry gland.

Top conduit (M20) or rear cable entry, complete with blanking plug.

All flanges have the same fixing centres and outside dimensions to assist panel builders.

Minimised flange option available (see page 240).

**16/32A** new range has different fixing centres to old range.

Old range is available for limited period. See technical section for details.

**IP 44  
SPLASHPROOF  
> 50V  
300 - 500 Hz**

### Plugs



### Connectors



### Socket Outlets

ANGLED  
SURFACE



STRAIGHT  
PANEL MOUNTING



Amps Pin. Configuration Earth Hour Pos

16 3P+E 2

**K9011 GRN**

**K9111 GRN**

**K9211 GRN**

**K9411 GRN**

16 3P+N+E 2

**K9017 GRN**

**K9117 GRN**

**K9252 GRN**

**K9417 GRN**

32 3P+N+E 2

**K9047 GRN**

**K9146 GRN**

**K9258 GRN**

**K9447 GRN**

Fitted with cable entry gland.

Fitted with cable entry gland.

**16A** Top conduit (M20) or rear cable entry, complete with blanking plug.

**32A** Top conduit (M25) or rear cable entry, complete with blanking plug.

All flanges have the same fixing centres and outside dimensions to assist panel builders.

Minimised flange option available (see page 240).

**IP 44  
SPLASHPROOF  
> 50V  
> 300 - 500 Hz**

### Switch Socket Outlets

ANGLED  
INTERLOCKED  
SURFACE



Amps Pin. Configuration Earth Hour Pos

16 3P+E 2

**K9605 GRN**

Switch can be locked in open or closed position.

technical hotline +44 (0)1268 563720

ingress protected | wiring devices

**IP 44  
SPLASHPROOF  
IS TRAN~  
50 - 60 Hz**

### Plugs

### Connectors

### Socket Outlets

ANGLED  
SURFACE

STRAIGHT  
PANEL MOUNTING

ANGLED  
PANEL MOUNTING

Amps Pin. Earth  
Config-uration Pos



16 2P+E 12

**K9004 GRY**

**K9104 GRY**

**K9204 GRY**

**K9404 GRY**

**K9756 GRY**

Fitted with cable entry gland.

Fitted with cable entry gland.

Top conduit (M20) or rear cable entry, complete with blanking plug.

All flanges have the same fixing centres and outside dimensions to assist panel builders. Minimised flange option available (see page 240).

16/32A new range has different fixing centres to old range.

Old range is available for limited period. See technical section for details.

**IP 44  
SPLASHPROOF  
>50 - 250V  
d.c.**

### Plugs

### Connectors

### Socket Outlets

ANGLED  
SURFACE

STRAIGHT  
PANEL MOUNTING

Amps Pin. Earth  
Config-uration Pos



16 2P+E 3

**K9003 GRY**

**K9103 GRY**

**K9203 GRY**

**K9403 GRY**

Fitted with cable entry gland.

Fitted with cable entry gland.

Top conduit (M20) or rear cable entry, complete with blanking plug.

All flanges have the same fixing centres and outside dimensions to assist panel builders.

Minimised flange option available (see page 240).

All products are available in minimum order quantity of one.  
Photographs feature the most representative products.  
Design changes may occur (over different current ratings) from one product to another.

**IP 44  
SPLASHPROOF  
25V  
50 - 60 Hz**

**ELV RANGE**

Amps Pin. Configuration

16	2P
16	3P

**Plugs**



**Connectors**



**Socket Outlets  
STRAIGHT  
SURFACE**



**ANGLED  
PANEL MOUNTING**



**Appliance Inlets  
SURFACE**



<b>K9018 VLT</b>
<b>K9019 VLT</b>

<b>K9118 VLT</b>
<b>K9119 VLT</b>

<b>K9253 VLT</b>
<b>K9254 VLT</b>

<b>K9518 VLT</b>
<b>K9519 VLT</b>

<b>K9725 VLT</b>
<b>K9726 VLT</b>

Top conduit or rear cable entry. Supplied with M25 blanking plug/cable entry.

Top conduit or rear cable entry. Supplied with M25 blanking plug/cable entry.

**IP 44  
SPLASHPROOF  
50V  
50 - 60 Hz**

**ELV RANGE**

Amps Pin. Configuration Minor Key Pos

16	2P	12
16	3P	12

**Plugs**



**Connectors**



**Socket Outlets  
STRAIGHT  
SURFACE**



**ANGLED  
PANEL MOUNTING**



<b>K9020 WHI</b>
<b>K9021 WHI</b>

<b>K9120 WHI</b>
<b>K9121 WHI</b>

<b>K9255 WHI</b>
<b>K9256 WHI</b>

<b>K9520 WHI</b>
<b>K9521 WHI</b>

Top conduit or rear cable entry. Supplied with M25 x 1.5 blanking plug/cable entry.

**IP 44  
SPLASHPROOF  
25 & 50V  
d.c.**

**ELV RANGE**

Amps Pin. Configuration Minor Key Pos

16	2P	10
----	----	----

**Plugs**



**Connectors**



**Socket Outlets  
STRAIGHT  
SURFACE**



**ANGLED  
PANEL MOUNTING**



<b>K9022 WHI</b>
------------------

<b>K9122 WHI</b>
------------------

<b>K9257 WHI</b>
------------------

<b>K9522 WHI</b>
------------------

All violet and white products on this page are made of Polyamide

Top conduit or rear cable entry. Supplied with M25 blanking plug/cable entry.

technical hotline +44 (0)1268 563720

ingress protected | wiring devices

**110 - 130V**  
**50 - 60 Hz**

### Three Way Adaptor

IP 44 SPLASHPROOF



Amps	Pin. Configuration	Earth Hour Pos
16	2P+E	4

### Combi Blocks THREE WAY

IP 44 SPLASHPROOF



### TWO WAY

IP 57 WATERTIGHT



### TWO WAY 30mA RCD PROTECTED

IP 44 SPLASHPROOF



Amps	Pin. Configuration	Earth Hour Pos
16	2P+E	4

**K9907 YEL**
**13503 YEL**
**13507 YEL**
**13505 YEL**

**PBT enclosure**  
One appliance inlet and three socket outlets

Rubber housing

Rubber housing

Rubber housing

**200 - 250V**  
**50 - 60 Hz**

### Three Way Adaptor

IP 44 SPLASHPROOF



Amps	Pin. Configuration	Earth Hour Pos
16	2P+E	6

### Combi Blocks THREE WAY

IP 44 SPLASHPROOF



### TWO WAY

IP 57 WATERTIGHT



### TWO WAY 30mA RCD PROTECTED

IP 44 SPLASHPROOF



Amps	Pin. Configuration	Earth Hour Pos
16	2P+E	6

**K9908 BLU**
**13504 BLU**
**13508 BLU**
**13506 BLU**

**PBT enclosure**  
One appliance inlet and three socket outlets

Rubber housing

Rubber housing

Rubber housing

**380 - 415V**  
**50 - 60 Hz**

### Three Way Adaptor

IP 44 SPLASHPROOF



Amps	Pin. Configuration	Earth Hour Pos
16	3P+E	6
16	3P+N+E	6

**K9910 RED**
**K9911 RED**

**PBT enclosure**  
One appliance inlet and three socket outlets

### Protective Covers For Inlets

### Minimised and Alternate Flanges

### Spare FL Type Flange Plates Gland Plates And Gaskets

### Conduit Adaptors

### Earth Lead Adaptors And Blanking Plugs



9960



9963



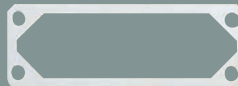
K9997



K9981/2/3



9952



9953



K9992



K9994



K9995



9933



6830

**9960 BLK**  
FOR 2P+E, 16A

**9961 BLK**  
FOR 3P+E, 16A

**9962 BLK**  
FOR 3P+N+E, 16A

**9963 BLK**  
FOR 3P+N+E, 32A

**9965 BLK**  
FOR ALL 125A (IP67)

**9966 BLK**  
2P+E, 3P+E, 32A

**9967 BLK**  
FOR ALL 63A (IP44)

#### 1 Minimised:

**1 K9996**  
FOR 2P+E, 16A

10

**1 K9997**  
FOR 3P+E, 3P+N+E, 16A

10

#### 1 Alternate:

**1 K9981**  
FOR 2P+E, 16A

10

**1 K9982**  
FOR 3P+E, 3P+N+E, 16A

10

**1 K9983**  
FOR 2P+E, 3P+E, 3P+N+E, 32A

10

**9952**  
GLAND PLATE  
UNDRILLED FL9

**9953**  
GLAND PLATE  
UNDRILLED FL13

**9954**  
GASKET FL9

**9955**  
GASKET FL13

**1 K9991**  
FLEXIBLE CONDUIT ADAPTOR  
FOR USE WITH 2P+E/16A PLUGS &  
CONNECTORS M20 THREAD SIZE

**1 K9992**  
FLEXIBLE CONDUIT ADAPTOR  
FOR USE WITH 3P+E/16A PLUGS &  
CONNECTORS M20 THREAD SIZE

**1 K9993**  
FLEXIBLE CONDUIT ADAPTOR  
FOR USE WITH 3P+N+E/16A PLUGS  
& CONNECTORS M20 THREAD SIZE

**1 K9994**  
FLEXIBLE CONDUIT ADAPTOR  
FOR USE WITH 2P+E & 3P+E/32A  
PLUGS & CONNECTORS  
M25 THREAD SIZE

**1 K9995**  
FLEXIBLE CONDUIT ADAPTOR  
FOR USE WITH 3P+N+E/32A PLUGS  
& CONNECTORS M25 THREAD SIZE

**5 9933**  
M20 X 1.5/ M25 X 1.5 THREAD SIZE  
USED ON ALL 16A SOCKET OUTLETS  
AND APPLIANCE INLETS (EXCEPT  
INTERLOCKED). ALSO USED ON  
16A AND 25A SAFETYSWITCHES

**5 9934**  
M25 X 1.5/ M25 X 1.5 THREAD SIZE  
USED ON ALL 32A SOCKET OUTLETS  
AND APPLIANCE INLETS (EXCEPT  
INTERLOCKED)

**5 9936**  
PG21/ M25 X 1.5 THREAD SIZE  
USED ON 16A & 32A INTERLOCKED  
SWITCHSOCKET OUTLETS

**5 9937**  
M32 X 1.5/ M32 X 1.5 THREAD SIZE  
USED ON ALL 63A SOCKET OUTLETS  
AND APPLIANCE INLETS

**5 6829**  
BLANKING PLUG/ CABLE ENTRY M16 X 1.5

**5 9988**  
BLANKING PLUG/ CABLE ENTRY M20 X 1.5

**5 9989**  
BLANKING PLUG/ CABLE ENTRY M25 X 1.5

**5 6830**  
BLANKING PLUG/ CABLE ENTRY M32 X 1.5

SUITABLE FOR  
IP44 PANEL SOCKET  
STRAIGHT OUTLETS

SUITABLE FOR  
COMMANDO UNITS AND  
SAFETYSWITCHES

9937 must not be used on installations  
that are rated above 63 amps

technical hotline +44 (0)1268 563720

ingress protected | wiring devices

## Commando Industrial Plugs and Sockets



By referring to the chart below, it can be seen that there can be no interchangeability of products as the earth socket tube is placed in a different 'clock' position according to the voltage and frequency. This clock position is determined by looking into a socket-outlet from the front with the key-way at the bottom.

Unless otherwise stated all frequencies are 50-60Hz.

### Pilot Contact

Commando accessories provided with pilot contacts, in accordance with IEC.60309: 1997 and BS EN.60309:1998 have pilot pins shorter than other pins in the unit. Connection to suitable control circuitry will provide electrical interlock as the pilot circuit will make last and break first relative to the mains supply.

The pilot contact is positioned centrally in 3P + E and 3P+N+E accessories and diametrically opposite the earthing contact in 2P+E accessories.

### Rating Code

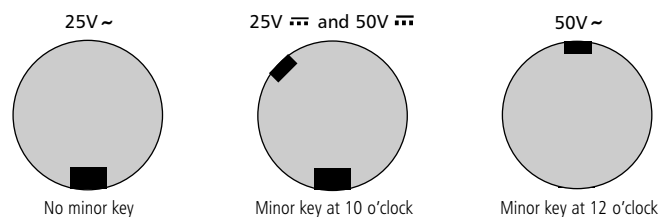
The rating code which is found on the rating label of each accessory gives details of rated current, rated (operating) voltage (or range of voltages), rated frequency (if not 50/60Hz) and a symbol to indicate the position of the earth contact.

(i) For all products (except extra low voltage) the position given is that of the earth pin when a socket-outlet/connector is viewed from the front with the key-way at the bottom. When viewing a plug/appliance inlet from the front with the key at the bottom, the position of the earth pin is reversed, i.e., a 10 o'clock will appear at 2 o'clock and other positions are relative.

(ii) For extra low voltage products (i.e., white and violet) the position given is that of the minor key when a socket-outlet is viewed from the front with the major key at the bottom. When viewing a plug/appliance inlet from the front with the major key-way at the bottom, the position of the minor key is reversed, i.e., 10 o'clock will appear as 2 o'clock and other positions are relative.

Voltage	Colour code
25	
50	
100 - 130	
200 - 250	
346 - 460	
500 - 750	
>50, 100 - 500Hz	

### MAJOR AND MINOR KEY POSITIONS FOR ELV SOCKETS



Key for symbols	
	a.c.
	d.c.
	isolating transformer

